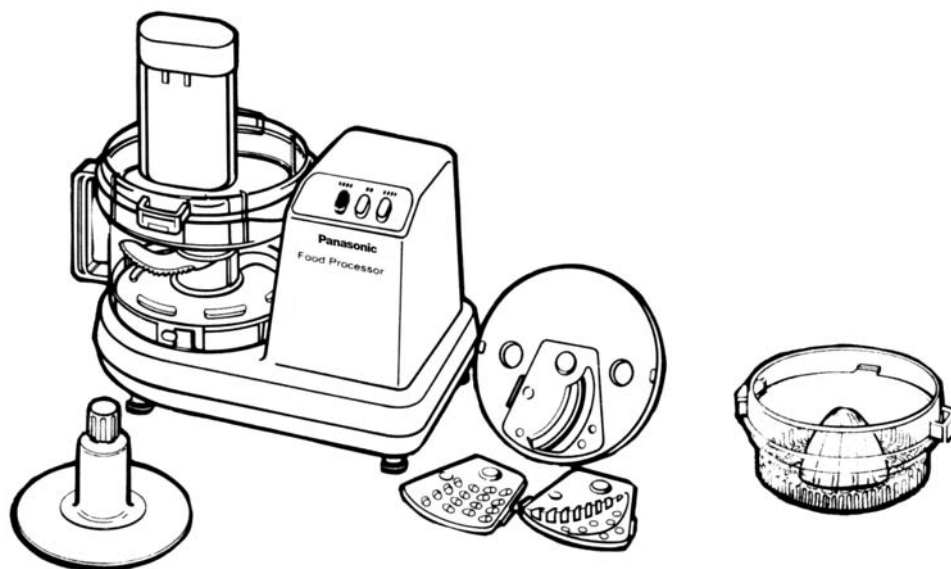


# Service Manual

**Food Processor  
MK-5086M**



## SPECIFICATION

Power supply	AC240V
Frequency	50/60Hz
Power consumed	210W~230W
Rating time	Continuous
Motor speed	2200r.p.m
Capacity	400g (Solid) 800ml (Liquid)
Dimensions	340(H) x 203(W) x 324(D) mm
Weight	3.4kg
Colour	Spring Green

\* Specifications are subject to change without notice.

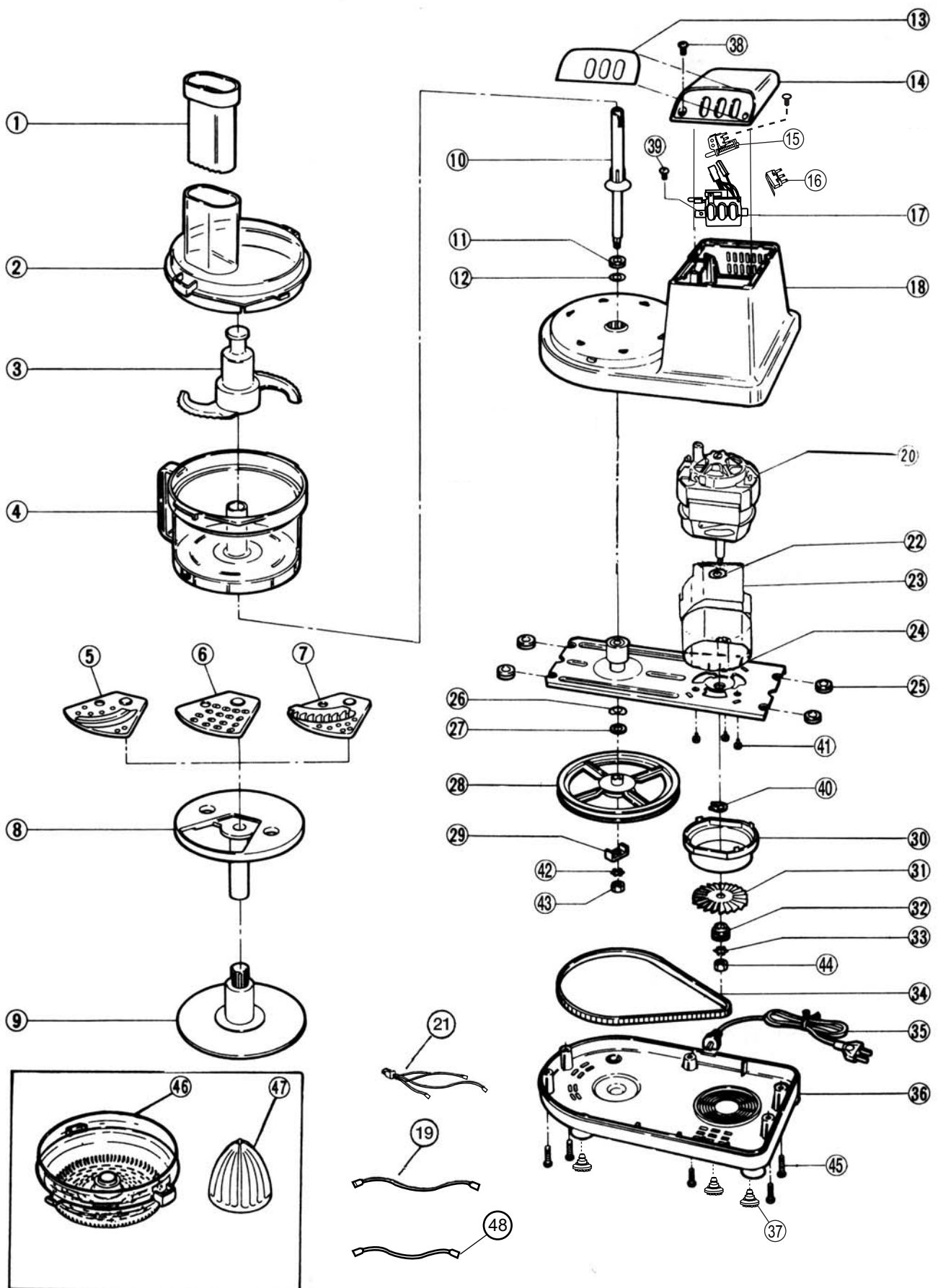
### **WARNING**

This service information is designed for experienced repair technicians only and is not designed for use by the general public. It does not contain warnings or cautions to advise non-technical individuals of potential dangers in attempting to service a product. Products powered by electricity should be serviced or repaired only by experienced professional technicians. Any attempt to service or repair the product or products dealt with in this service information by anyone else could result in serious injury or death.

# Panasonic

© 2005 Panasonic Manufacturing Malaysia Berhad (6100-K). Unauthorized copying and distribution is a violation of law.

# PARTS LOCATION MK-5086M



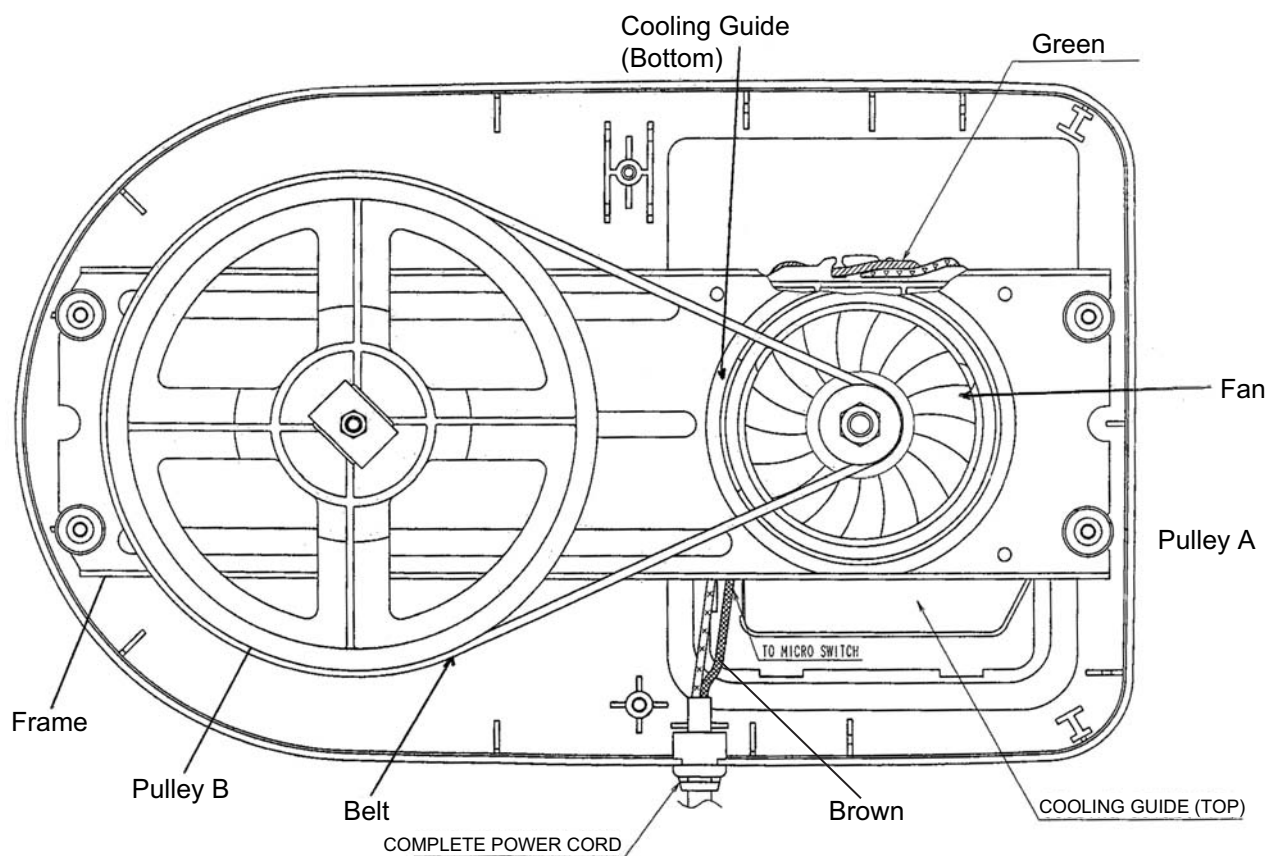
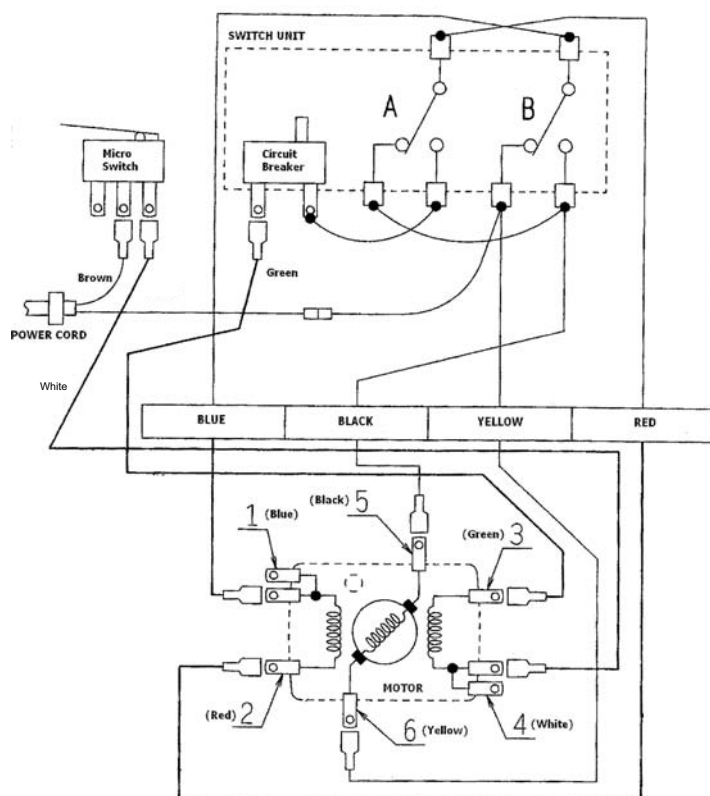
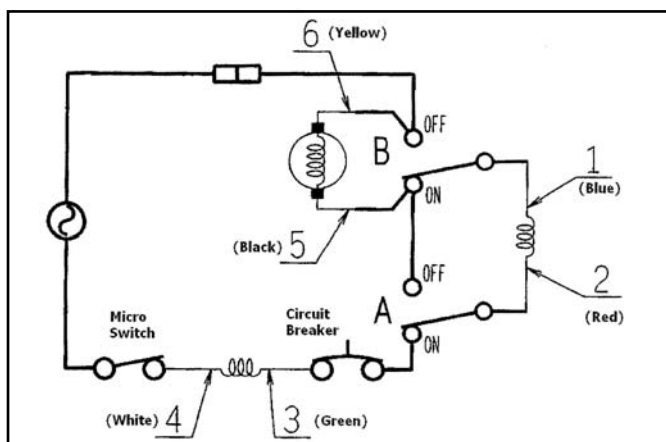
# REPLACEMENT PARTS LIST

Ref. No.	Part Name	Part No.	Qty	Remarks
1	FOOD PUSHER	AMU12G-680	1	
2	COVER	AMUE02-142CG	1	SPRING GREEN
3	KNIFE BLADE (U)	AMU96G-B503	1	
4	BOWL	AMU11B9510CG	1	SPRING GREEN
5	SLICING BLADE (U)	AMU91G-680	1	
6	SHREDDING BLADE (U)	AMU87G-680	1	
7	FRENCH FRY BLADE (U)	AMU94G-680	1	
8	BLADE STAND	AMU20G-F900W	1	
9	WHIPPING BLADE	AMU51G-F900W	1	
10	MAIN SHAFT (U)	AMU96B-680	1	
11	OIL SEAL	AMU23B-400	1	
12	SHAFT WASHER A	AMU30A-300	1	
13	FRONT PANEL	AMUY06M142	1	
14	MOTOR HOUSING COVER	AMUB03-142-W	1	WHITE
15	MICRO SWITCH BASE	AUN16-142	1	
16	MICRO SWITCH	ACN90-1191	1	
17	SWITCH (U)	AMUN99-142	1	
18	MOTOR HOUSING (U)	AMUB99M142LW	1	LILY WHITE
19	LEAD WIRE E	AMUP05Y133	1	
20	MOTOR	SMS253ASYA	1	AC240V
21	RELAY WIRE A UNIT	AMUP70S133	1	
22	FELT B	AMU08B-680	1	
23	COOLING GUIDE (TOP)	AMUM02Y133	1	
24	FRAME (S)	AMU22Q-680	1	
25	RUBBER CUSHION	AMU37B-280	4	
26	WAVE WASHER	AMX13B-451	1	
27	SHAFT WASHER	AMX27B-692	1	
28	PULLEY B	AMU28B-680	1	
29	LOCK WASHER	AMU77B-400	1	
30	COOLING GUIDE (BOTTOM)	AMU09F-680	1	
31	FAN	AMU08F-680	1	
32	PULLEY A	AMU27B-680	1	
33	EXTERNAL TOOTH LOCK WASHER	AJJ03M114	1	
34	BELT	AMU31B-530	1	
35	POWER CORD (U) (C-2)	AMUP86M142	1	
36	BOTTOM PLATE	AMU04A6830SR	1	
37	FOOT	AMU09A68100	4	
38	PAN HEAD TAPPING SCREW	XTN4+12BFJ	1	
39	PAN HEAD TAPPING SCREW	XTN4+12BFJ	1	
40	RETAINING RING	XUE6FP	1	
41	TAPPING SCREW AND WASHER ASS'Y	XYN5+C6FJ	3	
42	TOOTH LOCK WASHER	XWC4BFP	1	
43	NUT A	AMUJ99Y133	1	
44	LOCK NUT	AMUJ03Y133	1	L.H.THREAD
45	SCREW	XTN4+20BFJ	5	
46	STRAINER	AMUD10-142CG	1	SPRING GREEN
47	CONE	AMU04L-970W	1	
48	LEAD WIRE J	AMUP78-142	1	

# SCHEMATIC DIAGRAM AND CIRCUIT DIAGRAM

## MK-5086M

[Single Voltage Type]





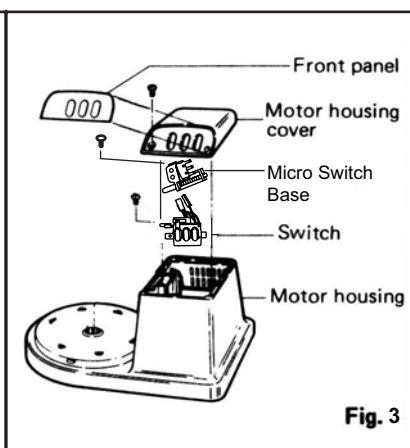
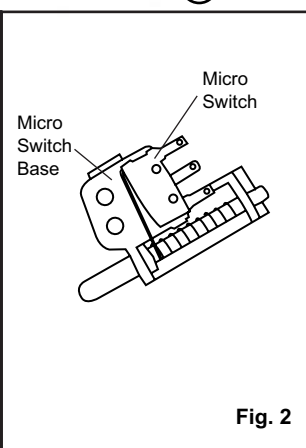
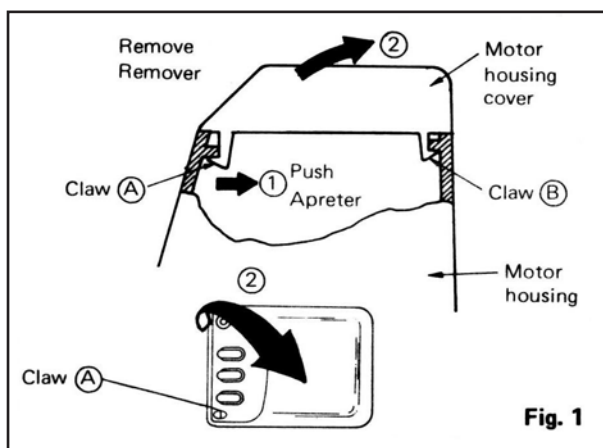
# DISASSEMBLY INSTRUCTIONS

## 1. Motor Housing Cover , Micro Switch Base & Switch (Fig 1, 2, 3).

- Remove the front panel first and then the screw secured to the motor housing cover.
- Push **claw (A)** as indicated by ⇒ ① of Fig 1 and then remove it, followed by removal of **motor housing cover** being done as ⇒ ②.
- Remove lead wire (White) and then screw, remove **Micro Switch Base** together with **Micro Switch**.  
Remove the screw holding the switch and then remove the lead wires (2 pcs) of the switch at the connected section for renewal of switch.

### (Precautions for Reassembly)

- Fix **Micro Switch Base** in place together with **Micro Switch**.
- When replacing **motor housing cover** to its original position, reassembly should be done in the reverse order to that of disassembly made in Point ② above.

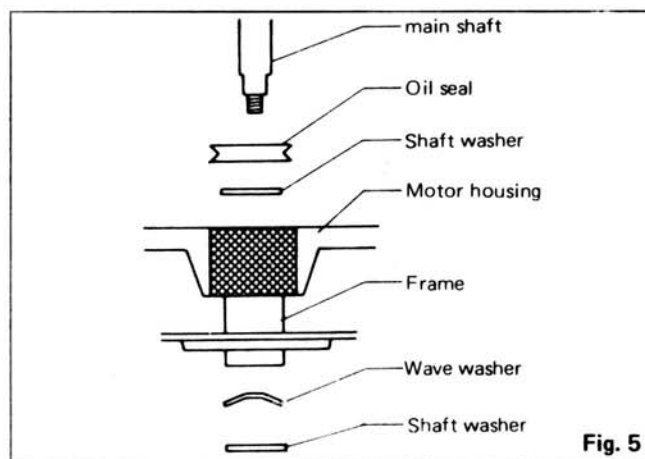
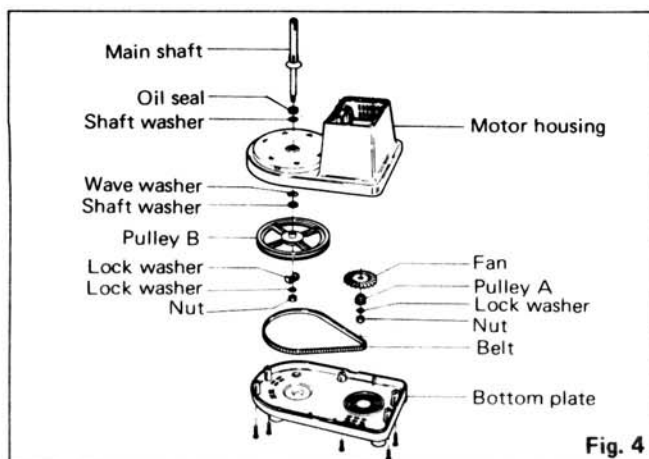


## 2. Belt, Pulley A, Pulley B and Main Shaft (Fig 4 & 5).

- Remove 5 bottom plate screws and take down the bottom plate.
- Pull the Belt out of Pulleys.
- Loosen the hexagonal nut which is clamping Pulley B and Main Shaft can be removed.
- Loosen the hexagonal nut which is tightening Pulley A can be dismantled.

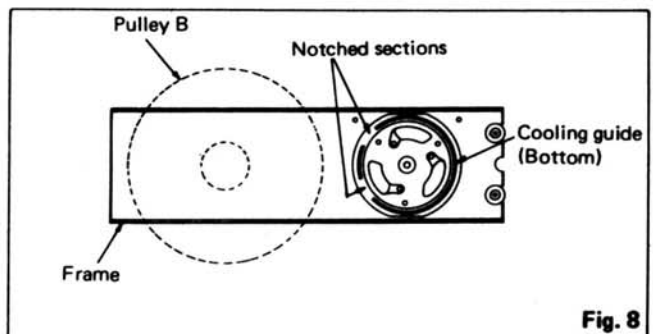
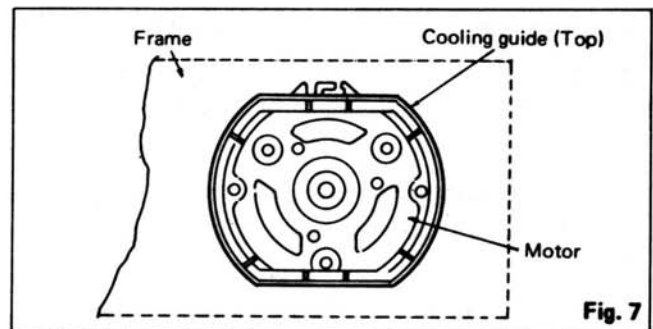
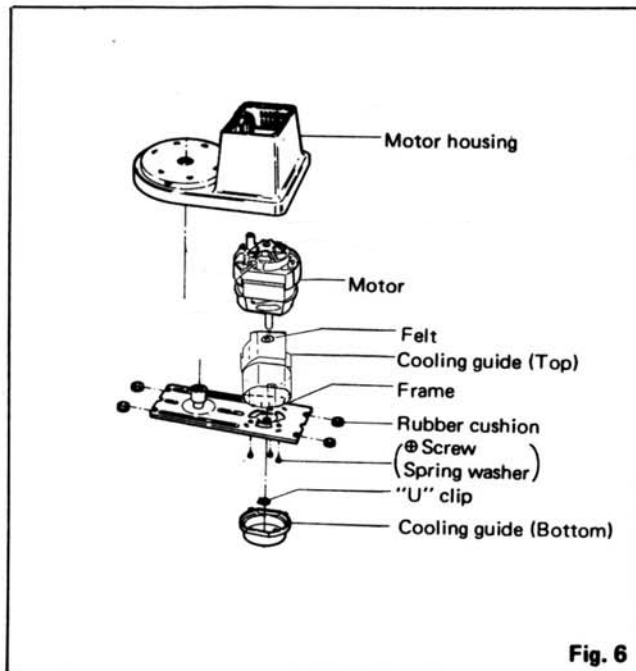
### (Precautions for Reassembly)

- Apply the Belt Securely on Pulleys.
- When conducting a repairing/servicing, the Nut A and Lock Nut should be replaced with a new part. This is because the **mentioned parts** can only be **used once and cannot be reused**.



### Note:-

- \* Tightening torque of Nut A to Pulley A should be control at 150~350N (15~35kgf.cm).
- \* Tightening torque of Lock Nut to Pulley B should be control at 200~300N (20~30kgf.cm).



### 3. Frame, Motor and Power Cord (Fig 6, 7 & 8).

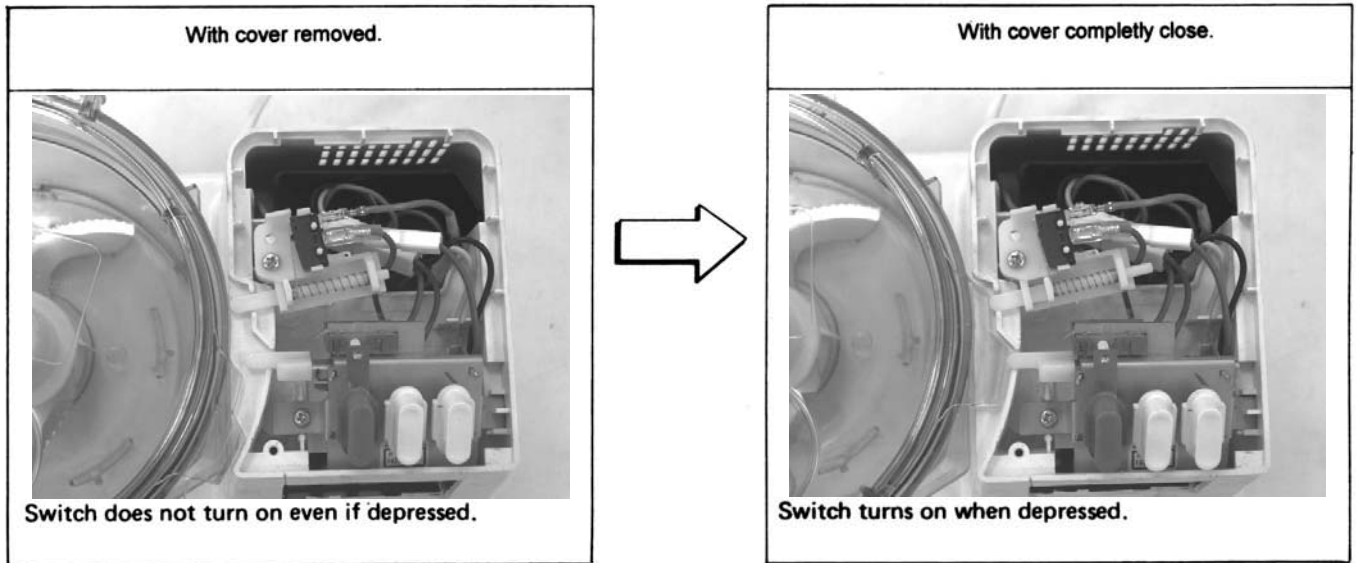
- a) Remove Pulley B and Main Shaft.
- b) Remove Frame and Motor from Motor Housing.
- c) Remove Cooling Guide (Bottom) from Frame, Since Cooling Guide (Bottom) is hooked on Frame by four claws. The claws should be bent for removal of the said guide.
- d) Fix the top end of Motor Shaft with a screwdriver (-) and turn the nut (L.H.thread) holding Pulley A in the clockwise direction for removal of the nut. Then Pulley A and Fan can be removed.
- e) Remove U- shaped clip inserted in Motor Shaft and then 3 screws holding Frame and Motor Shaft.  
Frame and Motor can then be removed.
- f) Remove Cooling Guide (Top) and then lead wires from the Motor so that replacement of Motor can be done.
- g) Cut off Power Cord at the connected sections of Motor and Switch for its replacement.

### (Precautions for Reassembly).

- a) Inserting of Cooling Guide Top) into Motor should be performed properly as shown in Fig.7.
- b) Motor should be fixed to Frame after Felt is inserted into Motor Shaft, followed by insertion of "U" clip into Motor Shaft.
- c) Cooling Guide (Bottom) should be so fixed to Frame that the two notched sections face Pulley B.

## GENERAL

This product is designed so that the switch does not work if the cover is not completely close.



## PRECAUTIONS

- A. When plug-in make sure the switch is 'OFF'. Do not pull power cord.
- B. The **knife blade** has a sharp edge. Holds its knob when handling it. Place the unit beyond child's reach.
- C. Do not use excessive food.
- D. Do not wash the **motor housing** in water.
- E. Be careful not to expose the unit to excessive moisture, temperature or direct sunlight.
- F. Do not use tough meat, frozen food, cabbage kernel, all other hard or viscous materials.

## NOTES

### Knife Blade

- Cut the food into small pieces.
- Avoid processing hot stuff over 60°C.
- If the food sticks around the **knife Blade**, once switch off, take out the food.
- The **motor housing** may sometimes vibrate in such a case, hold the **motor housing** with the hand and switch 'ON'.

### Slicing, Shredding and French Fry Blade.

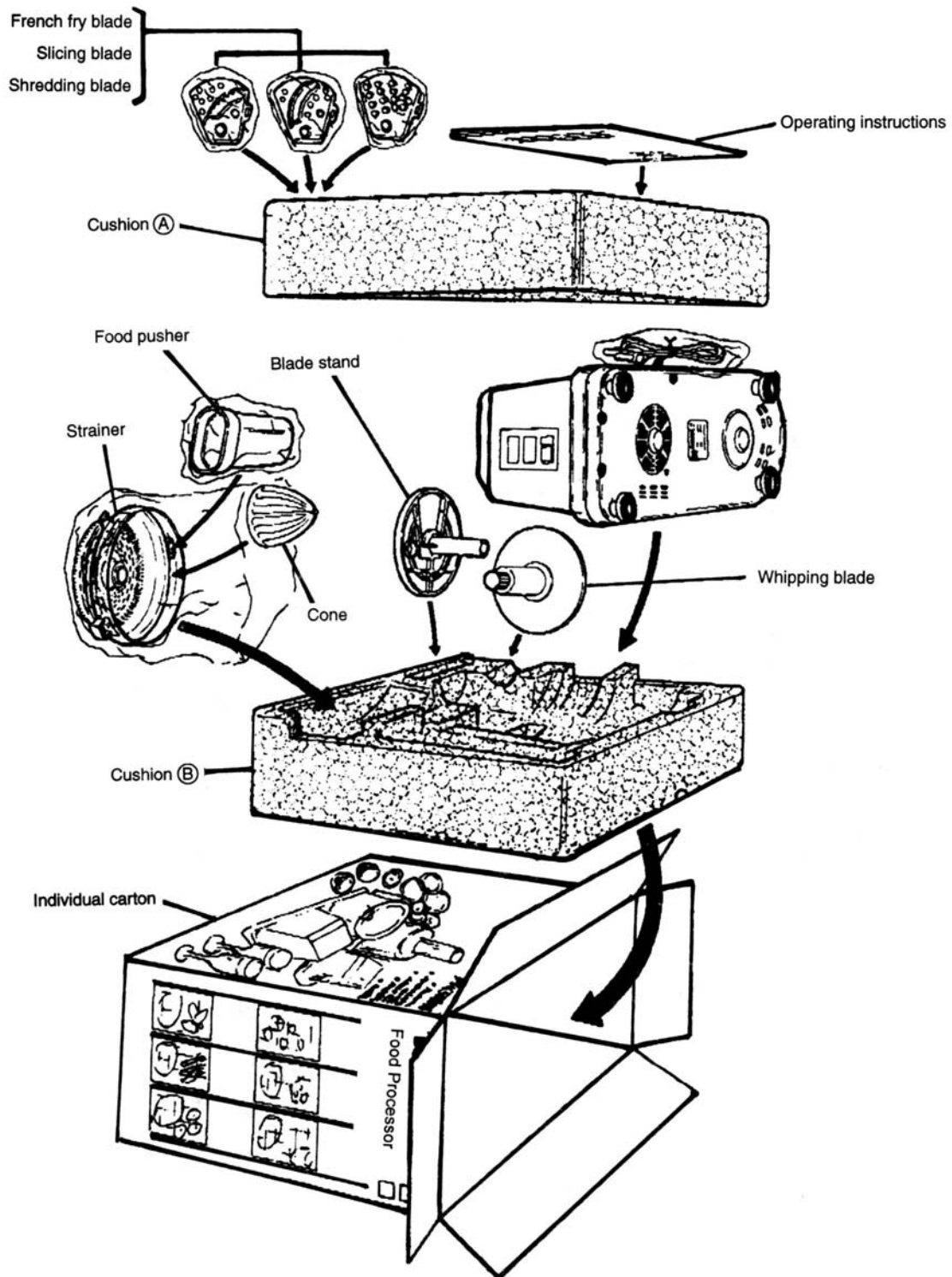
- When the food are long and round, place them into the right side of the **feed tube**.
- When **shredding**, insert 2½ inch (7cm) pieces food horizontally into the **feed tube**.

# TROUBLESHOOTING GUIDE

Symptom	Possible Cause	Inspection	Remedy
Motor rotates but main shaft won't.	<ul style="list-style-type: none"> <li>Moisture in the material penetrates deep in between the oilless bearing and shaft to make the shaft sticky.</li> <li>Material bites into between the blades and container to cause the pulleys to slip.</li> </ul>	<ul style="list-style-type: none"> <li>Check if main shaft is locked.</li> <li>Inspect the belt for excessive wear or breakage.</li> </ul>	<ul style="list-style-type: none"> <li>Replace main shaft, belts and frame. Refer to Manual Instructions.</li> <li>Replace belt. Refer to Manual Instructions.</li> </ul>
Motor won't rotate.	<ul style="list-style-type: none"> <li>The cover is not correctly set in position, the switch is not functioning.</li> <li>Defective continuity of microswitch or switch.</li> <li>The cover protuberance is broken, the switch is not functioning.</li> <li>Defective continuity of motor.</li> <li>Defective continuity at connection parts.</li> <li>Power cord broken.</li> </ul>	<ul style="list-style-type: none"> <li>Make sure cover is properly set close.</li> <li>Examine the continuity of micro switch or switch.</li> <li>Check if the protuberance of the cover is broken.</li> <li>Check the continuity of motor.</li> <li>Check the continuity of lead wire connection parts.</li> <li>Measure power cord continuity.</li> </ul>	<ul style="list-style-type: none"> <li>Set cover in place correctly.</li> <li>Replace</li> <li>Replace</li> <li>Replace</li> <li>Replace</li> <li>Replace</li> </ul>
Motor speed too low.	<ul style="list-style-type: none"> <li>Layer shortcircuit of motor.</li> <li>Faulty contact of carbon brush.</li> </ul>	<ul style="list-style-type: none"> <li>Examine if too many sparks are fired at the carbon brush part of the motor.</li> <li>Inspect if the carbon brush is worn out badly.</li> </ul>	<ul style="list-style-type: none"> <li>Replace</li> <li>Replace</li> </ul>
Excessive noise and vibration.	<ul style="list-style-type: none"> <li>Overload due too much material.</li> <li>Overload due to difficult materials cutting.</li> <li>Blades worn or deformed.</li> <li>Loosened bolts and nuts</li> </ul>	<ul style="list-style-type: none"> <li>See if too much materials is fed.</li> <li>Check if unspecified materials is used</li> <li>Observe the blades for abnormal wear deformation.</li> <li>Check bolts and nuts for loosening.</li> </ul>	<ul style="list-style-type: none"> <li>Refer to Manual Instructions.</li> <li>Refer to Manual Instructions.</li> <li>Replace</li> <li>Tighten securely.</li> </ul>
When the cover is removed during operation, the motor does not stop.	<ul style="list-style-type: none"> <li>Micro Switch defective</li> <li>Switch (u) defective</li> </ul>	<ul style="list-style-type: none"> <li>Check the Micro Switch</li> <li>Check the Switch (u)</li> </ul>	<ul style="list-style-type: none"> <li>Replace</li> <li>Replace</li> </ul>
With the cover removed, the motor rotates when the button switch is pressed.	<ul style="list-style-type: none"> <li>Micro Switch defective</li> <li>Switch (u) defective</li> </ul>	<ul style="list-style-type: none"> <li>Check the Micro Switch</li> <li>Check the Switch (u)</li> </ul>	<ul style="list-style-type: none"> <li>Replace</li> <li>Replace</li> </ul>
With the cover set, the switch does not turn 'ON' when pressed.	<ul style="list-style-type: none"> <li>Micro Switch defective</li> <li>Switch (u) defective</li> </ul>	<ul style="list-style-type: none"> <li>Check the Micro Switch</li> <li>Check the Switch (u)</li> </ul>	<ul style="list-style-type: none"> <li>Replace</li> <li>Replace</li> </ul>



# PACKING INSTRUCTIONS



## PACKING LIST

Part Name	Part No.	Qty	Remarks
INNER CARTON	AMUZ01M142	1	
CUSHION A	AUZ02Y129	1	
CUSHION B	AUZ03Y129	1	
OPERATING INSTRUCTION	AMUZ50M142	1	