

ORDER NO.TAMACO0706002C3

Service Manual

Blender

Model No. **MX-J18GWTX MX-J18GWTY MX-J18GWTH MX-J18GWTM**

White

PGF

UAE/OMAN

KUWAIT

QATAR/BAHRAIN



© 2007Matsushita Electric Industrial CO., Ltd. All rights reserved. Unauthorized copying and distribution is a violation of law.

WARNING

This service information is designed for experienced repair technicians only and is not designed for use by the general public. It does not contain warnings or cautions to advise non-technical individuals of potential dangers in attempting to service a product. Products powered by electricity should be serviced or repaired only by experienced professional technicians. Any attempt to service or repair the product or products dealt with in this service information by anyone else could result in serious injury or death.

Panasonic®

1 SPECIFICATION

Power supply	Local supply rating	Blender Container	Maximum 1800ml (Glass)
Operation rating	Continuous	Dimensions (HxWxD)	42.4x22.5x18.0 cm
	(Repetition 3 min. ON, 1 min. OFF)	Weight	4.3kg
Rating Speed	10000~11000r.p.m		

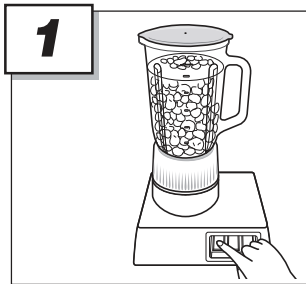
*Specifications are subject to change without notice.

2 GENERAL

BREAKER

A breaker is provided at the switch, for protection of the motor against rare short-circuiting. Therefore, when the motor is overloaded (i.e. when the breaker is subjected to the current larger than specified), the breaker will operate to open the circuit, causing the motor to stop. The breaker can be reset by depressing the "O" button of switch. When the motor is stopped, take the following actions.

1. Switch to "O" Button. Disconnect the power plug. Then, the "O" Button switch will reset the breaker.

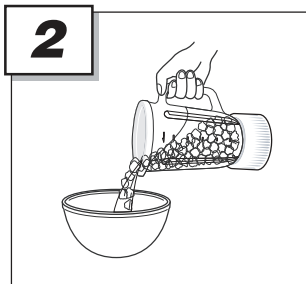


BREAKER PERFORMANCE

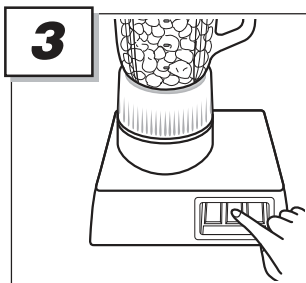
Take the reading of current at which the breaker operates under the constant-current power source (D.C) at 20°C.

Breaker for 240V Rating

2. Reduce the ingredients to less than a half in volume.



3. Resume operation.



CAUTIONS

- Maximum ingredient volume: 1,800 ml.
- Do not crush ice cubes only.
- Do not operate blender longer than 3 min. at one time. Rest for 1 min., then resume.
- Dice solid foods first. Blend with water.
- Before using, make sure voltage and frequency indicated on the bottom plate are the same as your local supply.
- When blending meat, fish, garlic or beans, do not fill the blender container over 1/3 full or operate more than 2 min.
- Do not immerse motor housing in water.
- Never remove or attach container when motor is operating.

3 TROUBLE SHOOTING GUIDE

Symptom	Possible Cause	Countermeasure
·Motor fails to Armature Ass'y Or humming noise is heard	1.Motor(Armature Ass'y,Field Ass'y) defective. 2.Wiring connection improper 3.Switch defective 4.Cord U broken 5.The current breaking function of switch is on 6.Motor short-circuited 7.Wear of Brush Ass'y	1.Replace Motor(Armature Ass'y,Field Ass'y) 2.Correct it 3.Replace Switch 4.Replace Cord U 5.Push "0" and then "1" of Switch 6.Replace Motor(Armature Ass'y, Field Ass'y) 7.Replace the two Brush Ass'y at the same time
·Cutter Ass'y fails to rotate	1.Cutter Ass'y shaft seizes up 2.Wear of Connector	1.Replace Cutter Ass'y and Cup Base Ass'y 2.Replace Connector(Upper or lower)
·Noises and vibrations are observed	1.Fastened conditions of screws improper 2.Cutter Ass'y deformed 3.Motor Shaft eccentric 4.Assembly of Juice Cup improper or fastened conditions of Cup Base Ass'y to Juice cup improper.	1.Fasten tightly 2.Replace Cutter Ass'y 3.Replace Armature Ass'y 4.Reassemble properly
·Juice or other material leaks	1.Juice cup cracked 2.Packing improperly fixed 3.Packing damaged 4.Juice cup and Cup Base Ass'y insufficiently fastened	1.Replace Juice cup 2.Properly fix Packing 3.Replace Packing 4.Fasten them firmly
·Current Breaking Function of Switch Ass'y fails and cause motor burning	Breaker of Switch Ass'y short-circuited	Replace both Motor(Armature Ass'y and Field Ass'y) and Switch Ass'y

4 DISASSEMBLY INSTRUCTIONS

4.1 Juice cup and Cutter Ass'y --Fig.1,2,3

- 4.1.1 Remove the cover A, then turn the Juice cup up-side-down.
- 4.1.2 Secure the Juice cup and turn the cup base Ass'y counter clockwise. then the packing can be removed.
- 4.1.3 Turn the connector upper clockwise with long nose pliers. Then the Cutter Ass'y and connector upper can be removed.



Fig. 1

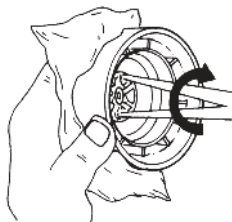


Fig. 2

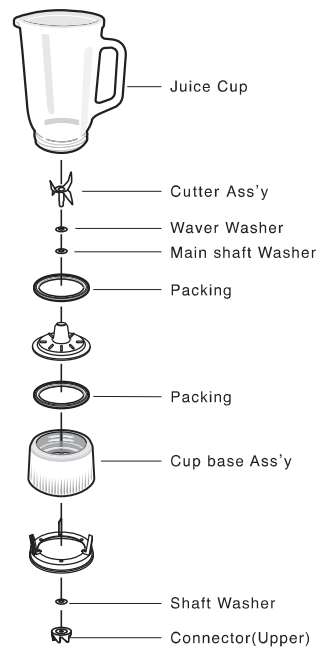


Fig. 3

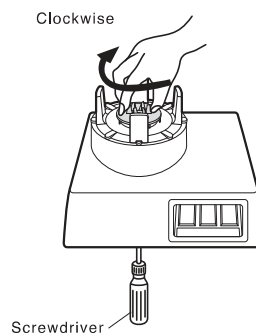


Fig. 4

4.2 Connector(Lower) -Fig.4

- 4.2.1 The bottom plate can be removed when its three screws are loosened.
 - 4.2.2 Hold the part under the motor shaft by means of a screws-driver, then turn the connector (lower) clockwise. The connector (lower) can be removed.
- The connector (lower) can be relatively easily removed by means of hitting its projecting section clockwise with use of a screwdriver grip in a forceful manner.

4.3 Botton plate, Body U and Cord U - Fig. 5

- 4.3.1 The Body U can be removed downwards from its cover when the Cord U and the breaker switch both held by the Body U are taken out.

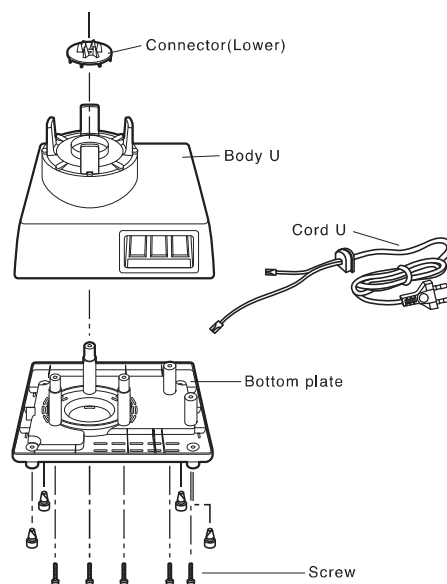
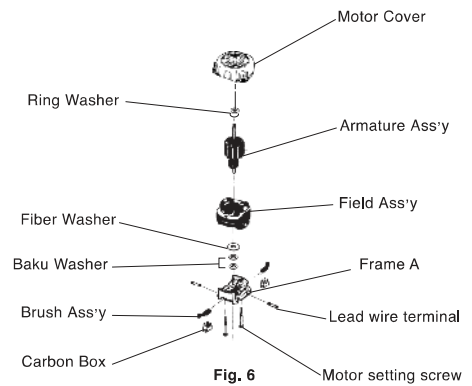


Fig. 5

4.4 Motor Cover ,Frame A ,Armature Ass'y and Field Ass'y -Fig.6

4.4.1 Remove the bottom plate and Body U .(Fig.5)

4.4.2 The motor cover, the frame A ,the Armature Ass'y and Field Ass'y can be disassembled when the motor setting screws and the wiring between the lead wire terminal of the frame and the Brush Ass'y guide are all removed.



4.5 Brush Ass'y

4.5.1 Remove the bottom plate.

4.5.2 The Brush Ass'y are fixed on Carbon Box. Pull out the Brush Ass'y by retracting claws of the Brush Ass'y terminals , protruding from the sides of the Carbon Box.

. Be sure to replace the two Brush Ass'y at the same time.

4.6 Reassembly of Motor Cover,Frame A,Armature Ass'y and Field Ass'y -Fig.7, 8

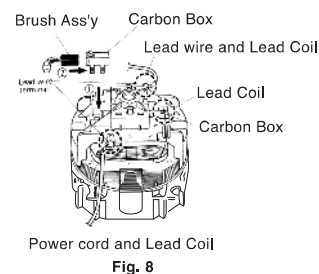
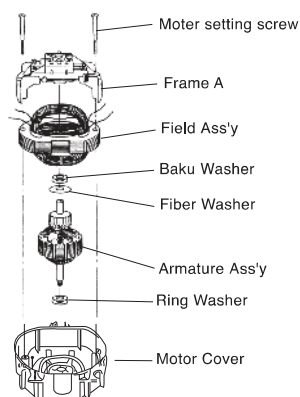
4.6.1 Put the motor cover upside-down and set on it the Ring Washer the Armature Ass'y, the Baku Washer and the Field Ass'y frame in this order.(Note that lead wire terminal should be fixed beforehand.)then, fix them to the motor cover by means of motor setting screws. In this case adjust clearance in the thrust direction and rotability of the Armature Ass'y by adding or reducing the number of Ring washers.

4.6.2 Set the Brush Ass'y guide and the Brush Ass'y in the frame. (Fig.8)

4.6.3 Solder the four lead coils of the Field Ass'y to the Brush Ass'y guide and the lead wire terminal,for wiring. (Fig.8)

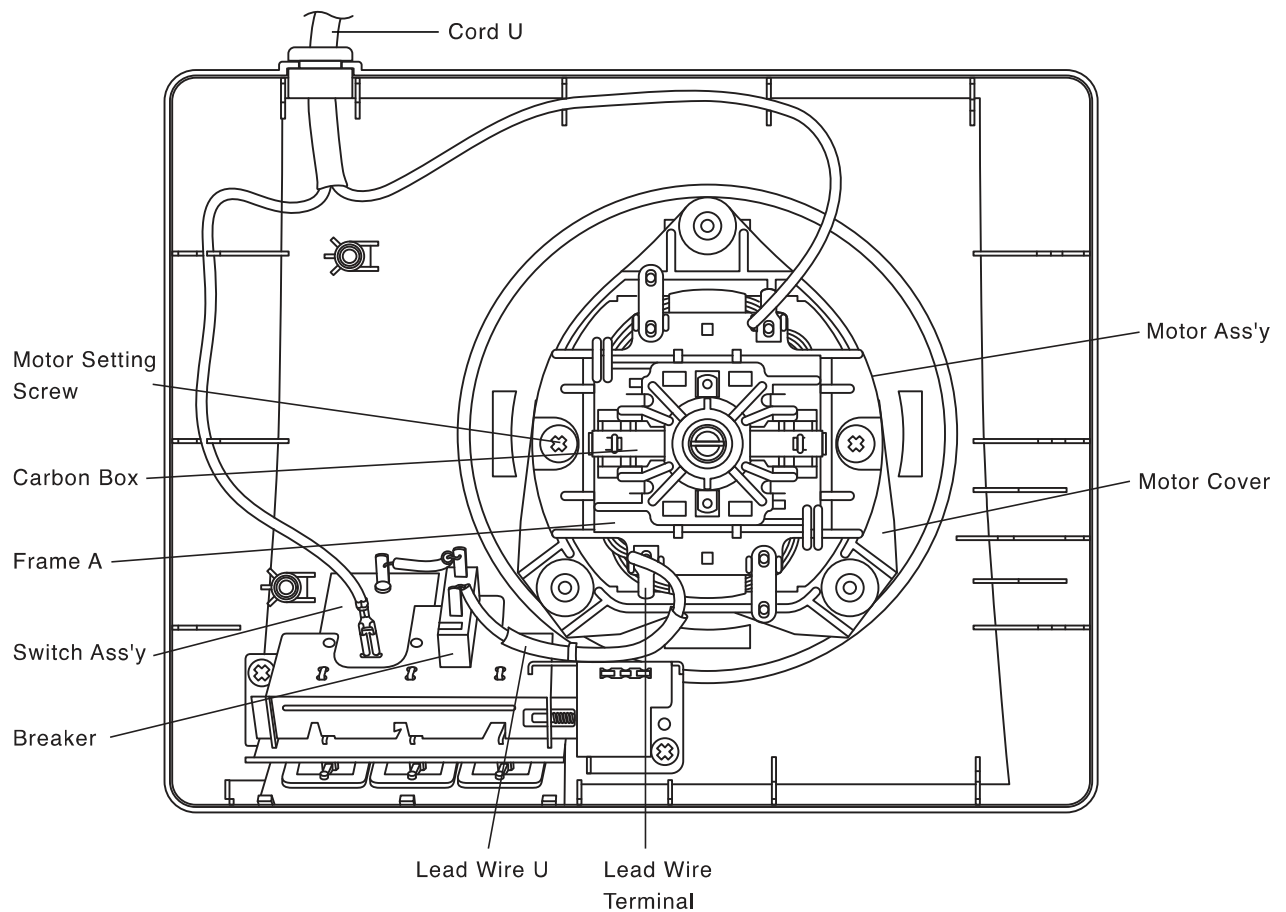
Note:

When the motor is found out of order, requiring replacement, be sure to renew the Armature Ass'y, the Field Ass'y and the Brush Ass'y at the same time . Furthermore, when the motor cover and/or the frame A are found defective on that occasion, replace them with new ones, as well, without fail.



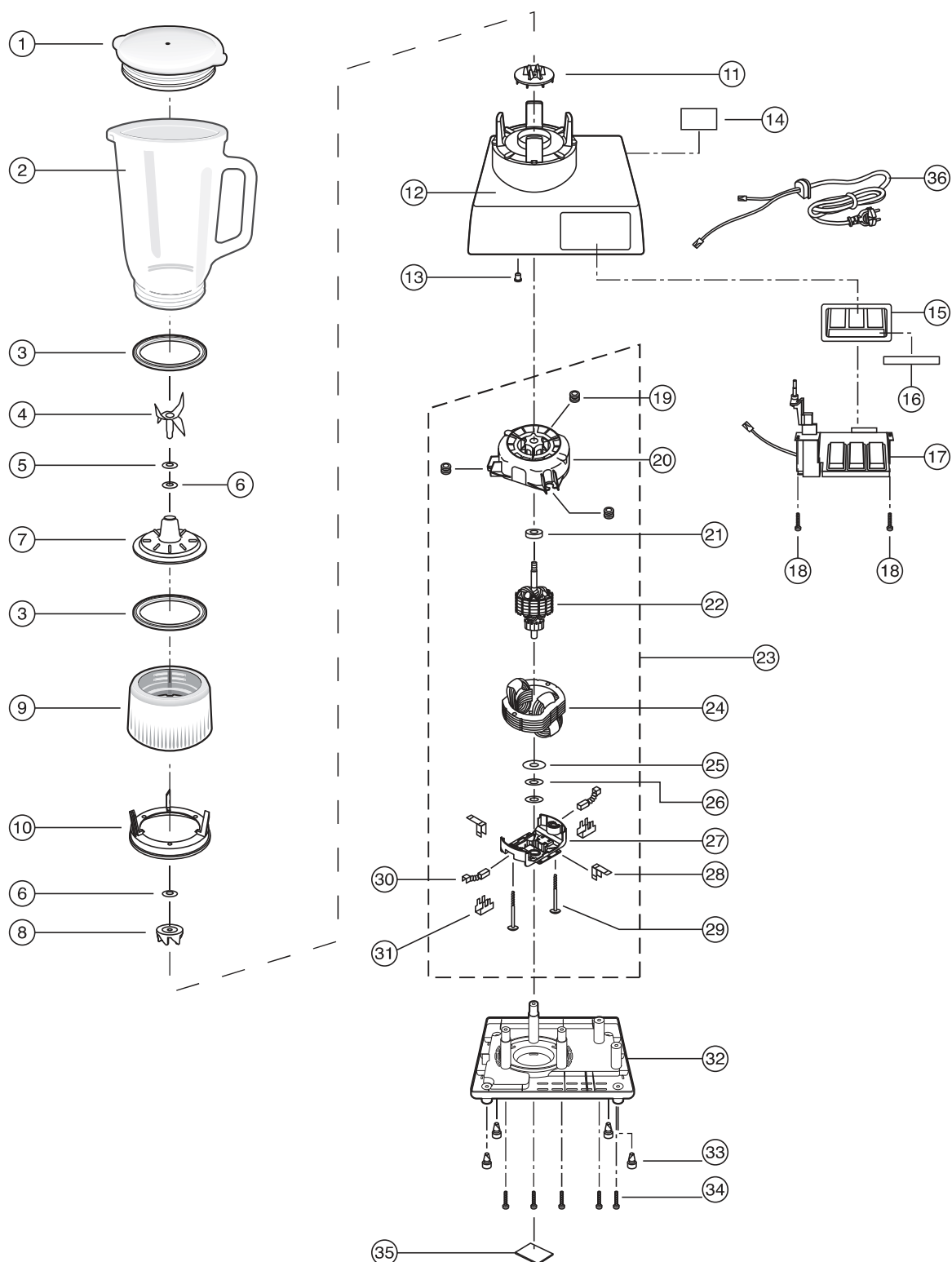
5 SCHEMATIC DIAGRAM:

MX-J18GWTX
MX-J18GWTY
MX-J18GWTH
MX-J18GWTM




6 PARTS LOCATON & REPLACEMENT PARTS LIST


6.1 PARTS LOCATION:Model No. MX-J18GWTX



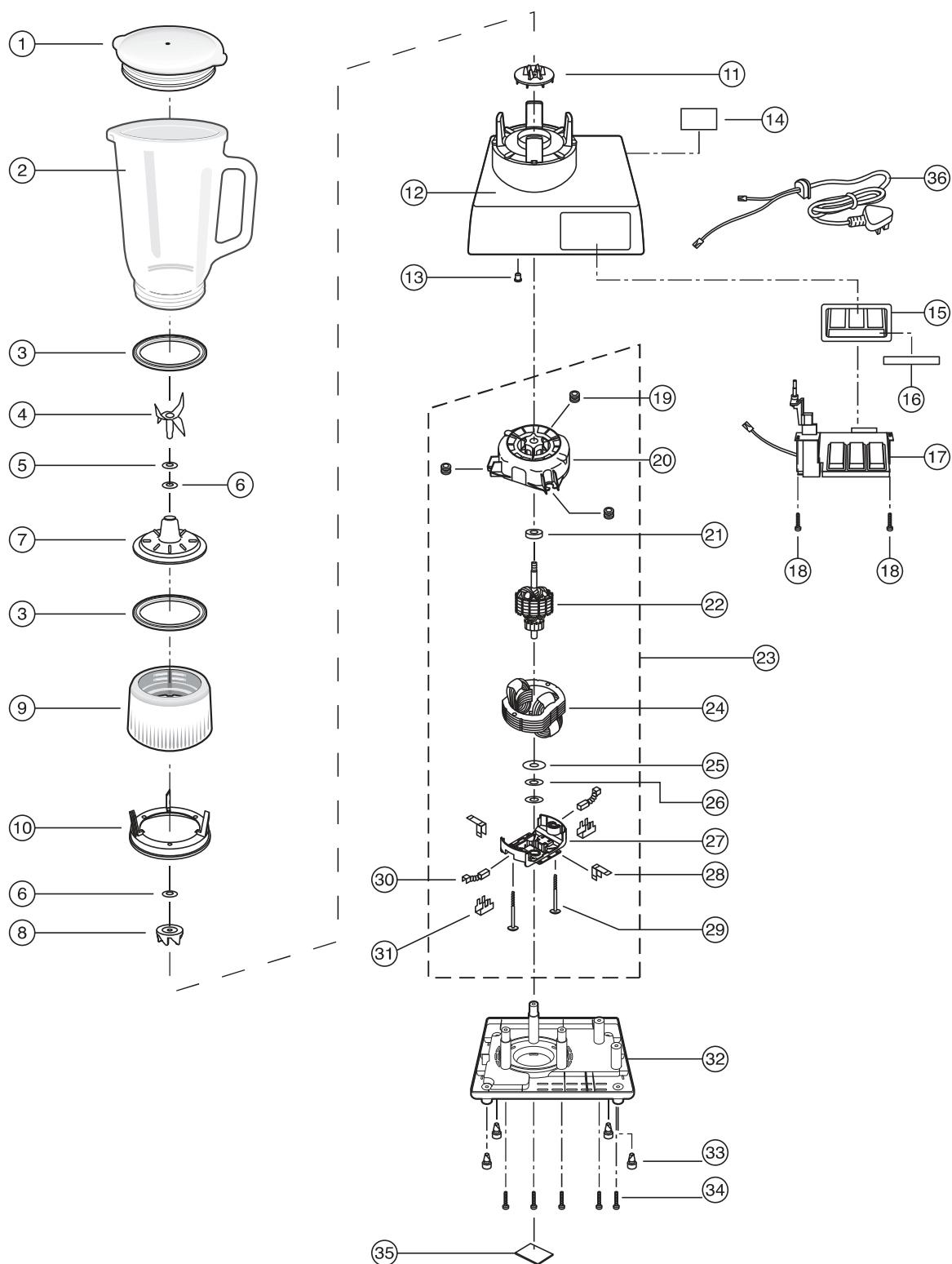
6.1.1 REPLACEMENT PARTS LIST: MX-J18GWTX

Important safety notice

Components identified by  mark have special characteristics for safety
When replacing any of these components, use only manufacturer's specified parts.

Ref. No.	Part No.	Part Name	Q'TY	Remarks
1	X0201-141	Cover A	1	
2	X0203-060	Glass Cup	1	
3	X0205-040	Packing	2	
4	X0224-190	Juice Cutter Ass'y	1	
5	X0217-010	Waver Washer	1	
6	X0227-030	Main Shaft Washer	2	
7	X0210-050	Bearing Case U	1	
8	X0411-100R	Connector (Upper)	1	
9	X0204-090	Cup Base	1	
10	X0213-040	Safety Device Lever	1	
11	VB99-184	Connector (Lower)	1	
12	X0101-150	Body	1	
13	X0104-010	Seal Cap	1	
14	X0175-020	Attention Sheet	1	
15	X0157-160	Body Deco Plate	1	
16	X0159-040	Deco Plate Film	1	
17	X0501-390	Switch Ass'y	1	
18	XTB4+10CFJ	Screw	2	
19	X0103-020	Body Cover Gum	3	
20	93-029535C	Motor Cover	1	
21	35-069118CR	Ring Washer	1	
22	92-029019C	Armature Ass'y	1	
23	X0701-540	Motor Ass'y	1	
24	91-0292230C	Field Ass'y	1	
25	35-069102	Fiber Washer	1	
26	35-069069CR	Baku Washer	1	
27	93-019534C	Frame A	1	
28	21-019034	Lead Wire Terminal	2	
29	38-109027R	Motor Setting Screw	2	
30	53-029086	Brush Ass'y	2	
31	21-029011	Carbon Box	2	
32	X0130-140	Bottom Plate	1	
33	X0133-020	Leg	4	
34	XTN4+20BFJ	Screw	5	
35	X0173-420	Name Plate	1	
36	X0550-860	Cord U	1	

6.2 PARTS LOCATION: Model No. MX-J18GWTY



6.2.1 REPLACEMENT PARTS LIST: MX-J18GWTY

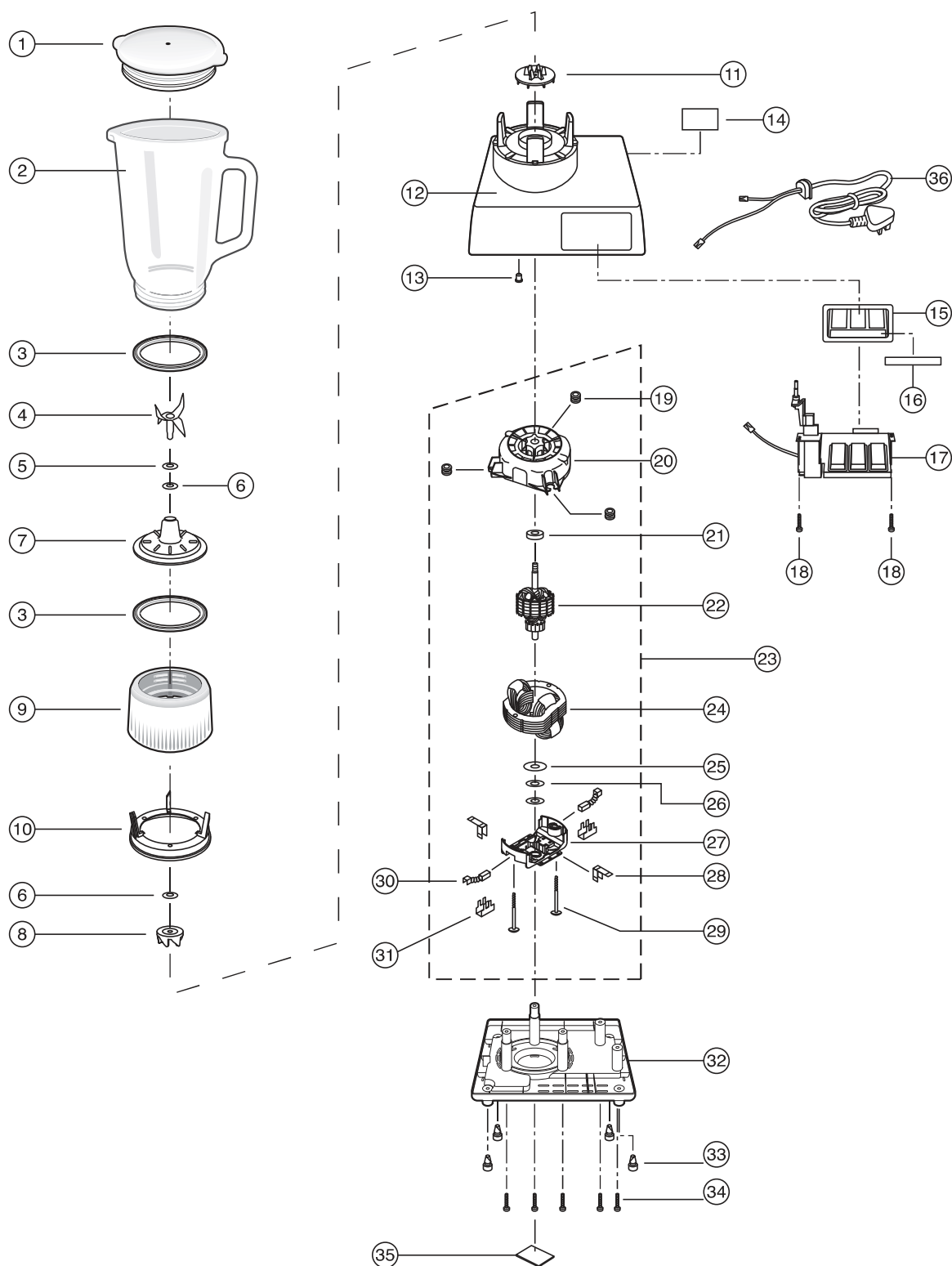
Important safety notice

Components identified by ⚠ mark have special characteristics for safety

When replacing any of these components, use only manufacturer's specified parts.

Ref. No.	Part No.	Part Name	Q'TY	Remarks
1	X0201-141	Cover A	1	
2	X0203-060	Glass Cup	1	
3	X0205-040	Packing	2	
4	X0224-190	Juice Cutter Ass'y	1	
5	X0217-010	Waver Washer	1	
6	X0227-030	Main Shaft Washer	2	
7	X0210-050	Bearing Case U	1	
8	X0411-100R	Connector (Upper)	1	
9	X0204-090	Cup Base	1	
10	X0213-040	Safety Device Lever	1	
11	VB99-184	Connector (Lower)	1	
12	X0101-150	Body	1	
13	X0104-010	Seal Cap	1	
14	X0175-020	Attention Sheet	1	
15	X0157-160	Body Deco Plate	1	
16	X0159-040	Deco Plate Film	1	
17	X0501-390	Switch Ass'y	1	⚠
18	XTB4+10CFJ	Screw	2	
19	X0103-020	Body Cover Gum	3	
20	93-029535C	Motor Cover	1	
21	35-069118CR	Ring Washer	1	
22	92-029019C	Armature Ass'y	1	
23	X0701-540	Motor Ass'y	1	⚠
24	91-0292230C	Field Ass'y	1	
25	35-069102	Fiber Washer	1	
26	35-069069CR	Baku Washer	1	
27	93-019534C	Frame A	1	
28	21-019034	Lead Wire Terminal	2	
29	38-109027R	Motor Setting Screw	2	
30	53-029086	Brush Ass'y	2	
31	21-029011	Carbon Box	2	
32	X0130-140	Bottom Plate	1	
33	X0133-020	Leg	4	
34	XTN4+20BFJ	Screw	5	
35	X0173-400	Name Plate	1	
36	X0550-850	Cord U	1	⚠

6.3 PARTS LOCATION: Model No. MX-J18GWTH



6.3.1 REPLACEMENT PARTS LIST: MX-J18GWITH

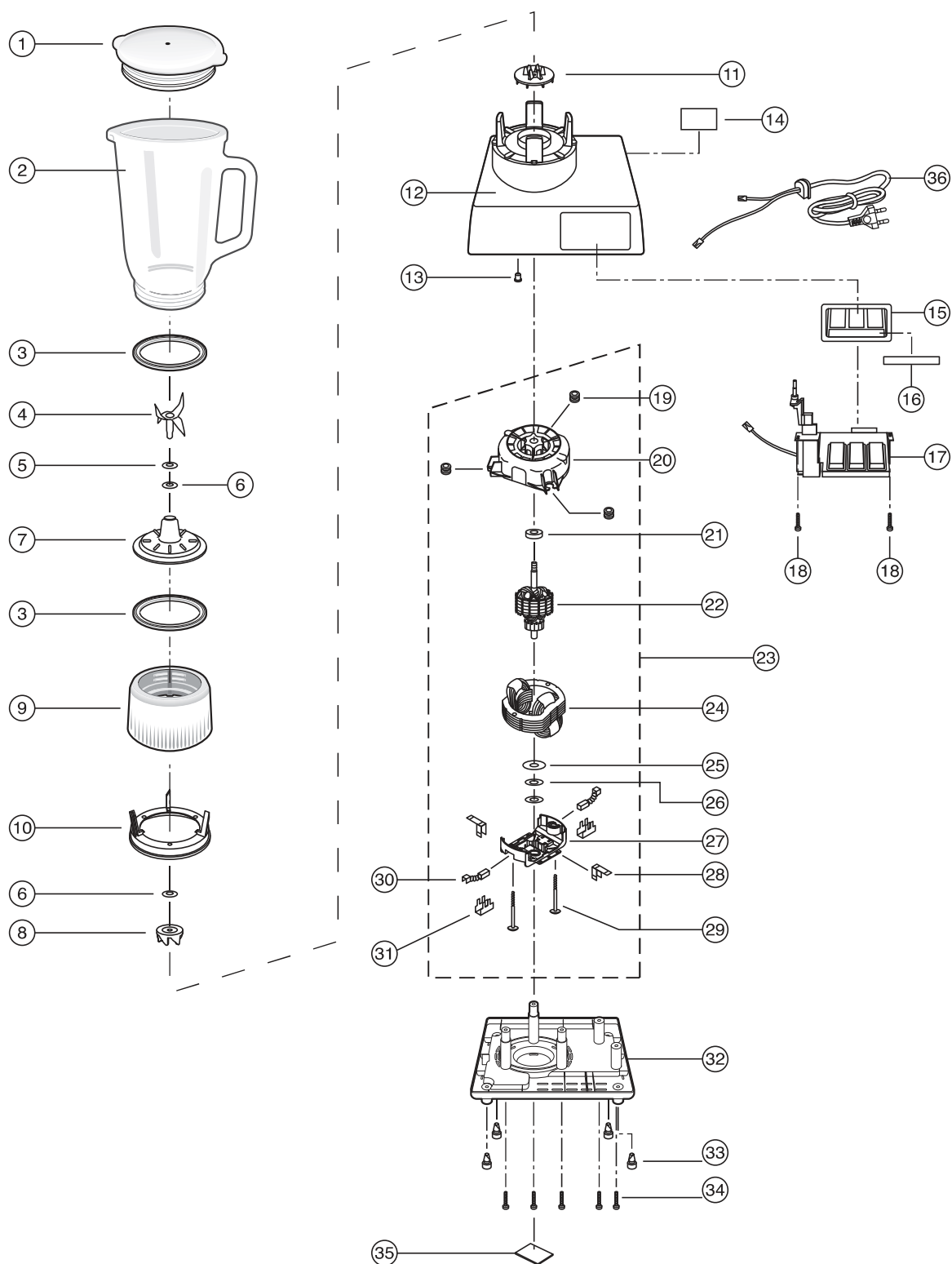
Important safety notice

Components identified by ⚠ mark have special characteristics for safety

When replacing any of these components, use only manufacturer's specified parts.

Ref. No.	Part No.	Part Name	Q'TY	Remarks
1	X0201-141	Cover A	1	
2	X0203-060	Glass Cup	1	
3	X0205-040	Packing	2	
4	X0224-190	Juice Cutter Ass'y	1	
5	X0217-010	Waver Washer	1	
6	X0227-030	Main Shaft Washer	2	
7	X0210-050	Bearing Case U	1	
8	X0411-100R	Connector (Upper)	1	
9	X0204-090	Cup Base	1	
10	X0213-040	Safety Device Lever	1	
11	VB99-184	Connector (Lower)	1	
12	X0101-150	Body	1	
13	X0104-010	Seal Cap	1	
14	X0175-020	Attention Sheet	1	
15	X0157-160	Body Deco Plate	1	
16	X0159-040	Deco Plate Film	1	
17	X0501-390	Switch Ass'y	1	⚠
18	XTB4+10CFJ	Screw	2	
19	X0103-020	Body Cover Gum	3	
20	93-029535C	Motor Cover	1	
21	35-069118CR	Ring Washer	1	
22	92-029019C	Armature Ass'y	1	
23	X0701-540	Motor Ass'y	1	⚠
24	91-0292230C	Field Ass'y	1	
25	35-069102	Fiber Washer	1	
26	35-069069CR	Baku Washer	1	
27	93-019534C	Frame A	1	
28	21-019034	Lead Wire Terminal	2	
29	38-109027R	Motor Setting Screw	2	
30	53-029086	Brush Ass'y	2	
31	21-029011	Carbon Box	2	
32	X0130-140	Bottom Plate	1	
33	X0133-020	Leg	4	
34	XTN4+20BFJ	Screw	5	
35	X0173-390	Name Plate	1	
36	X0550-850	Cord U	1	⚠

6.4 PARTS LOCATION: Model No. MX-J18GWTM



6.4.1 REPLACEMENT PARTS LIST: MX-J18GWTM

Important safety notice

Components identified by ⚠ mark have special characteristics for safety

When replacing any of these components, use only manufacturer's specified parts.

Ref. No.	Part No.	Part Name	Q'TY	Remarks
1	X0201-141	Cover A	1	
2	X0203-060	Glass Cup	1	
3	X0205-040	Packing	2	
4	X0224-190	Juice Cutter Ass'y	1	
5	X0217-010	Waver Washer	1	
6	X0227-030	Main Shaft Washer	2	
7	X0210-050	Bearing Case U	1	
8	X0411-100R	Connector (Upper)	1	
9	X0204-090	Cup Base	1	
10	X0213-040	Safety Device Lever	1	
11	VB99-184	Connector (Lower)	1	
12	X0101-150	Body	1	
13	X0104-010	Seal Cap	1	
14	X0175-020	Attention Sheet	1	
15	X0157-160	Body Deco Plate	1	
16	X0159-040	Deco Plate Film	1	
17	X0501-390	Switch Ass'y	1	⚠
18	XTB4+10CFJ	Screw	2	
19	X0103-020	Body Cover Gum	3	
20	93-029535C	Motor Cover	1	
21	35-069118CR	Ring Washer	1	
22	92-029019C	Armature Ass'y	1	
23	X0701-540	Motor Ass'y	1	⚠
24	91-0292230C	Field Ass'y	1	
25	35-069102	Fiber Washer	1	
26	35-069069CR	Baku Washer	1	
27	93-019534C	Frame A	1	
28	21-019034	Lead Wire Terminal	2	
29	38-109027R	Motor Setting Screw	2	
30	53-029086	Brush Ass'y	2	
31	21-029011	Carbon Box	2	
32	X0130-140	Bottom Plate	1	
33	X0133-020	Leg	4	
34	XTN4+20BFJ	Screw	5	
35	X0173-380	Name Plate	1	
36	X0550-870	Cord U	1	⚠

6.5 PACKING INSTRUCTIONS

