

# Service Manual

(Household) Hair Styler

Model No. **EH-KA12**

Model No. **EH-KA23**

Model No. **EH-KA42**


CHINA



## **WARNING**

This service information is designed for experienced repair technicians only and is not designed for use by the general public. It does not contain warnings or cautions to advise non-technical individuals of potential dangers in attempting to service a product. Products powered by electricity should be serviced or repaired only by experienced professional technicians. Any attempt to service or repair the product or products dealt with in this service information by anyone else could result in serious injury or death.

## **IMPORTANT SAFETY NOTICE**

There are special components used in this equipment which are important for safety. These parts are marked by  in the Schematic Diagrams, Circuit Board Diagrams, Exploded Views and Replacement Parts List. It is essential that these critical parts should be replaced with manufacturer's specified parts to prevent shock, fire or other hazards. Do not modify the original design without permission of manufacturer.

## TABLE OF CONTENTS

	PAGE		PAGE
<b>1 Warning</b> -----	<b>2</b>	<b>7.3. Model No. : EH-KA23 Exploded View for EH-</b>	
<b>2 Specifications</b> -----	<b>2</b>	<b>KA23</b> -----	<b>10</b>
<b>3 Troubleshooting Guide</b> -----	<b>3</b>	<b>7.4. Model No. : EH-KA23 Parts List</b> -----	<b>11</b>
<b>4 Disassembly and Assembly Instructions</b> -----	<b>4</b>	<b>7.5. Model No. : EH-KA42 Exploded View for EH-</b>	
4.1. Disassembly Instructions -----	<b>4</b>	<b>KA42</b> -----	<b>12</b>
4.2. Assembly Instructions -----	<b>4</b>	<b>7.6. Model No. : EH-KA42 Parts List</b> -----	<b>13</b>
<b>5 Wiring Connection Diagram</b> -----	<b>6</b>		
<b>6 Schematic Diagram</b> -----	<b>7</b>		
<b>7 Exploded View and Replacement Parts List</b> -----	<b>8</b>		
7.1. Model No. : EH-KA12 Exploded View for EH-			
KA12 -----	<b>8</b>		
7.2. Model No. : EH-KA12 Parts List -----	<b>9</b>		

# 1 Warning

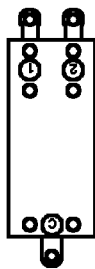
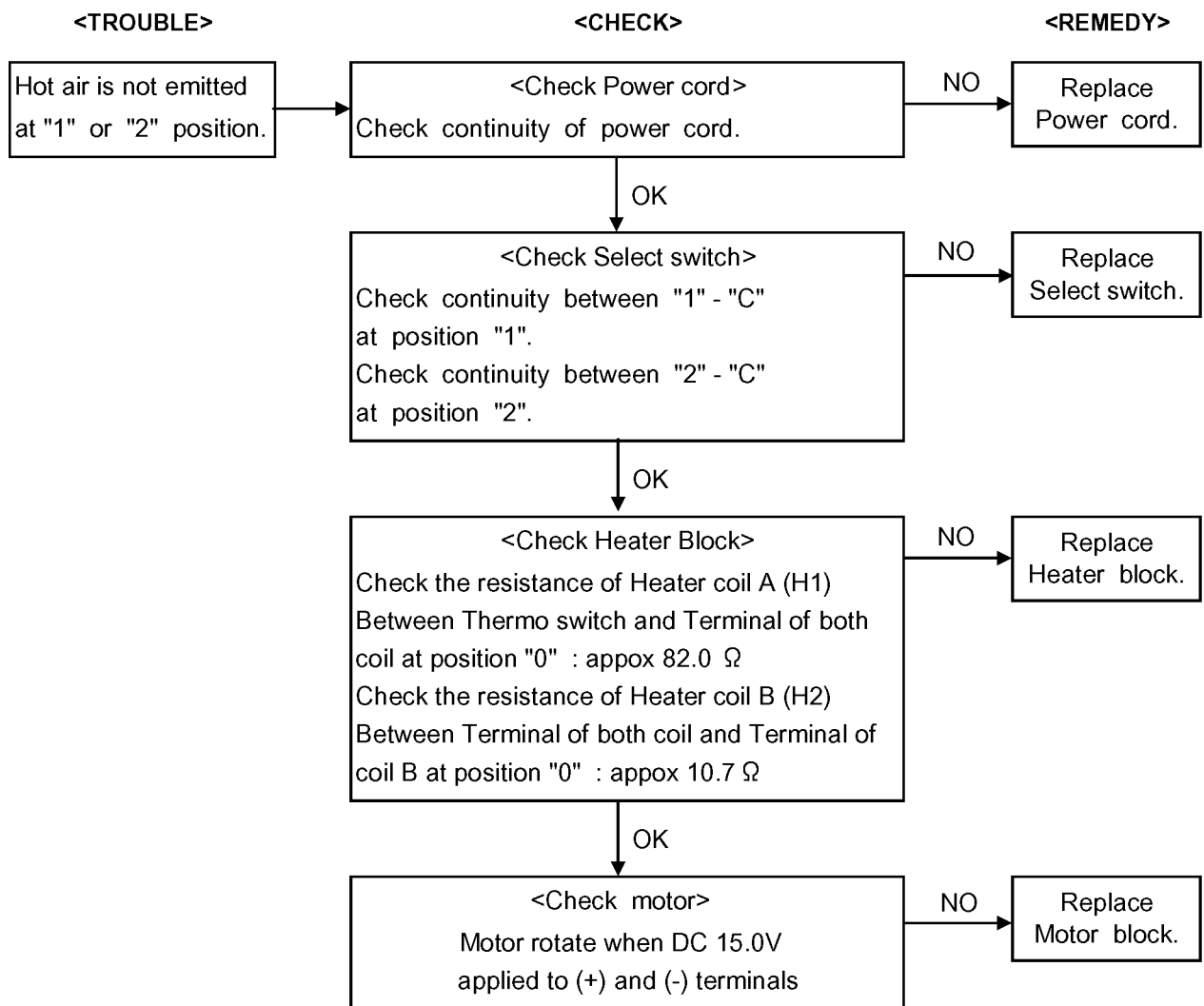
## Caution:

- Pb free solder has a higher melting point than standard solder; Typically the melting point is 50 - 70°F (30 - 40°C) or higher. Please use soldering iron with temperature control and adjust it to 750 ± 20°F. (400 ± 10°C).
- In case of using high temperature soldering iron, please be careful not to heat too long.
- Pb free solder will tend to splash when heated too high (about 1100°F / 600°C).

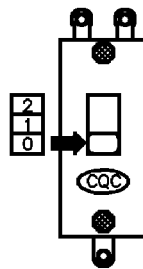
# 2 Specifications

Sell Area or Country		China (495)
Number of Model		EH-KA12
		EH-KA23
		EH-KA42
Power source		AC 220V / 50Hz
Power consumption		550W
Air volume with attachment		0.43 m <sup>3</sup> /min
Air flow temperature (in case of room temperature 30°C)		120°C
Cord length		A2 Plug : 1.7 m.
Weight	Roller Brush	320 g
	Nozzle	290 g
	Blow Brush	310 g
	Slim Roller Brush	300 g

### 3 Troubleshooting Guide



Back side



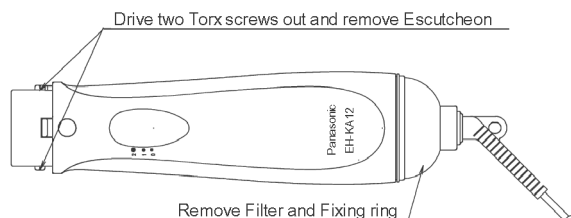
Front side

Select switch.

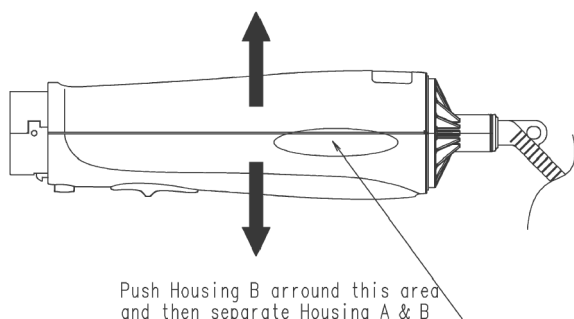
## 4 Disassembly and Assembly Instructions

### 4.1. Disassembly Instructions

1. Remove the two Torx screws from the Escutcheon, then remove Escutcheon, the Filter and the Fixing ring.

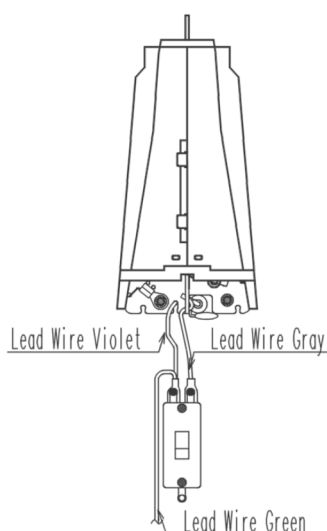


2. Separate the Housing A and B by unfastening Housing B at indicated area.

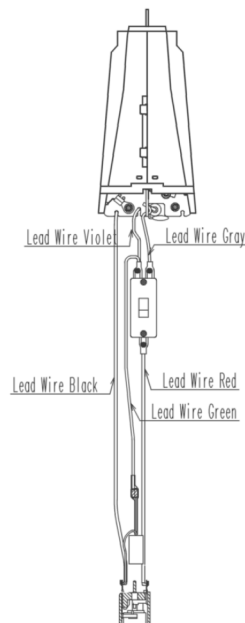


### 4.2. Assembly Instructions

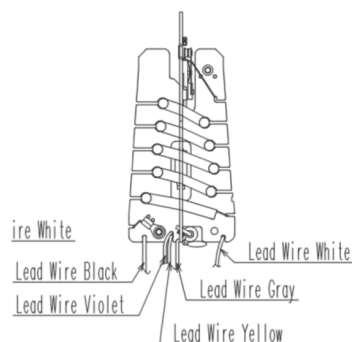
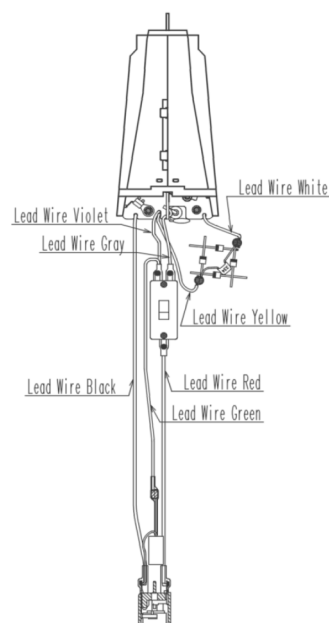
1. Assembly Select switch to Heater block and Connector cover by soldering Lead wires connect to the positions.

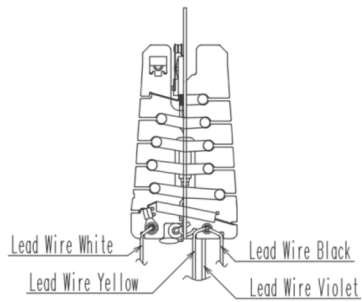


2. Assembly Connector cover block to Heater block by soldering Lead wires connect to the positions.

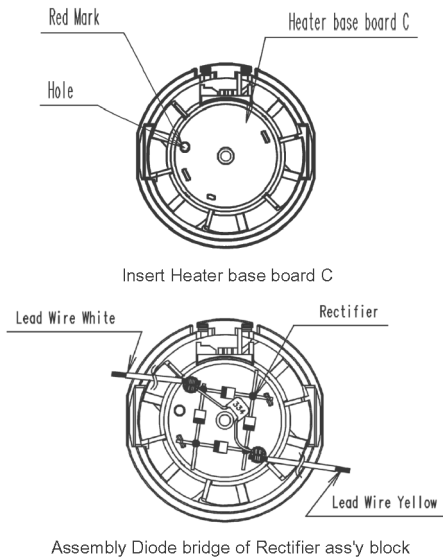


3. Assembly Rectifier ass'y block to Heater block by soldering Lead wires connect to the positions.

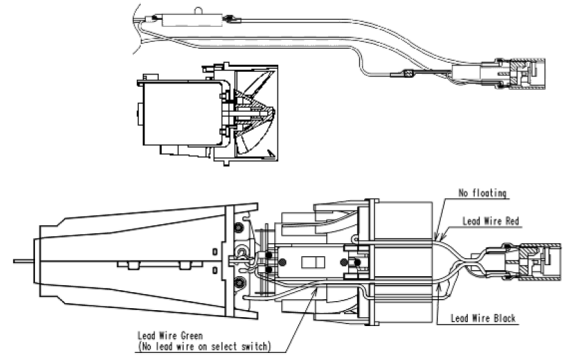




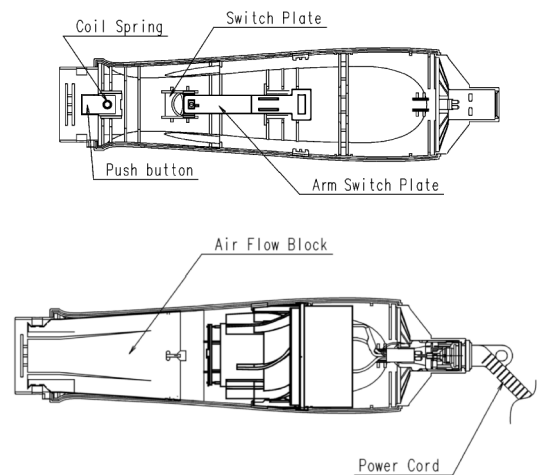
4. Insert Heater base board C to Motor ass'y block and assembly Diode bridge of Rectifier ass'y block to Motor's terminals by solder.



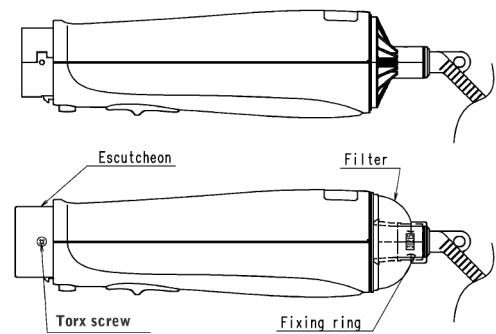
5. Assembly Select switch to Motor ass'y block, insert two Lead wires (Black and Red) into slot of Air flow regulator.



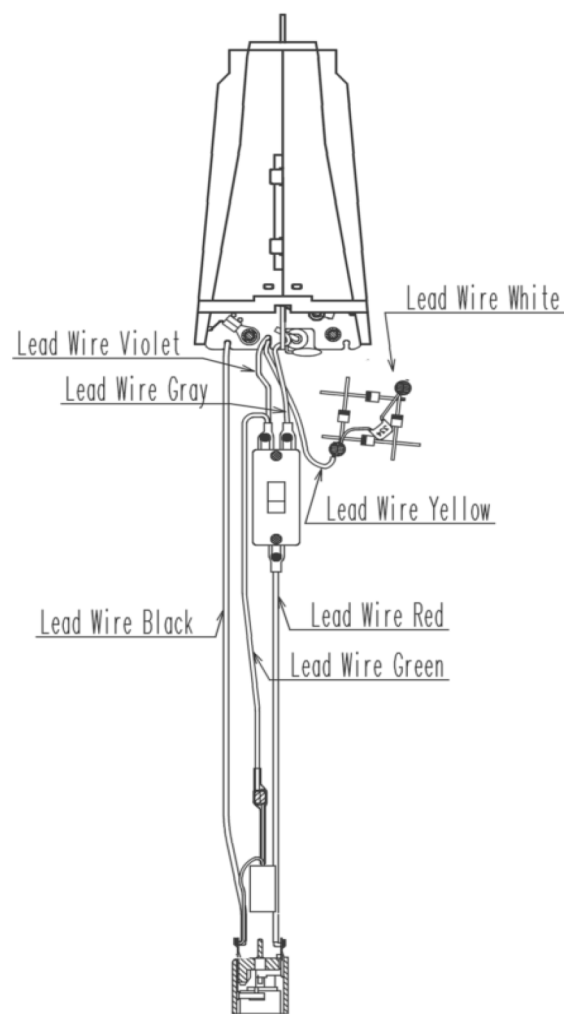
6. Assembly Parts into Housing B step by step.



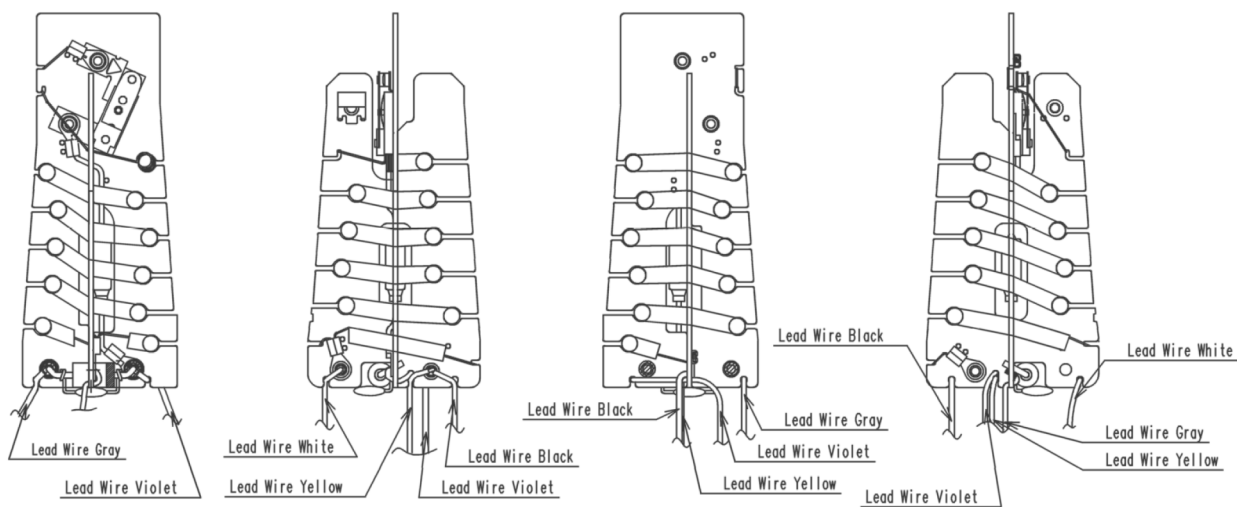
7. Assembly Housing A&B together, assembly Fixing ring, Filter, Escutcheon to Housing A&B and in the end tighter two Torx screws.



# 5    Wiring Connection Diagram

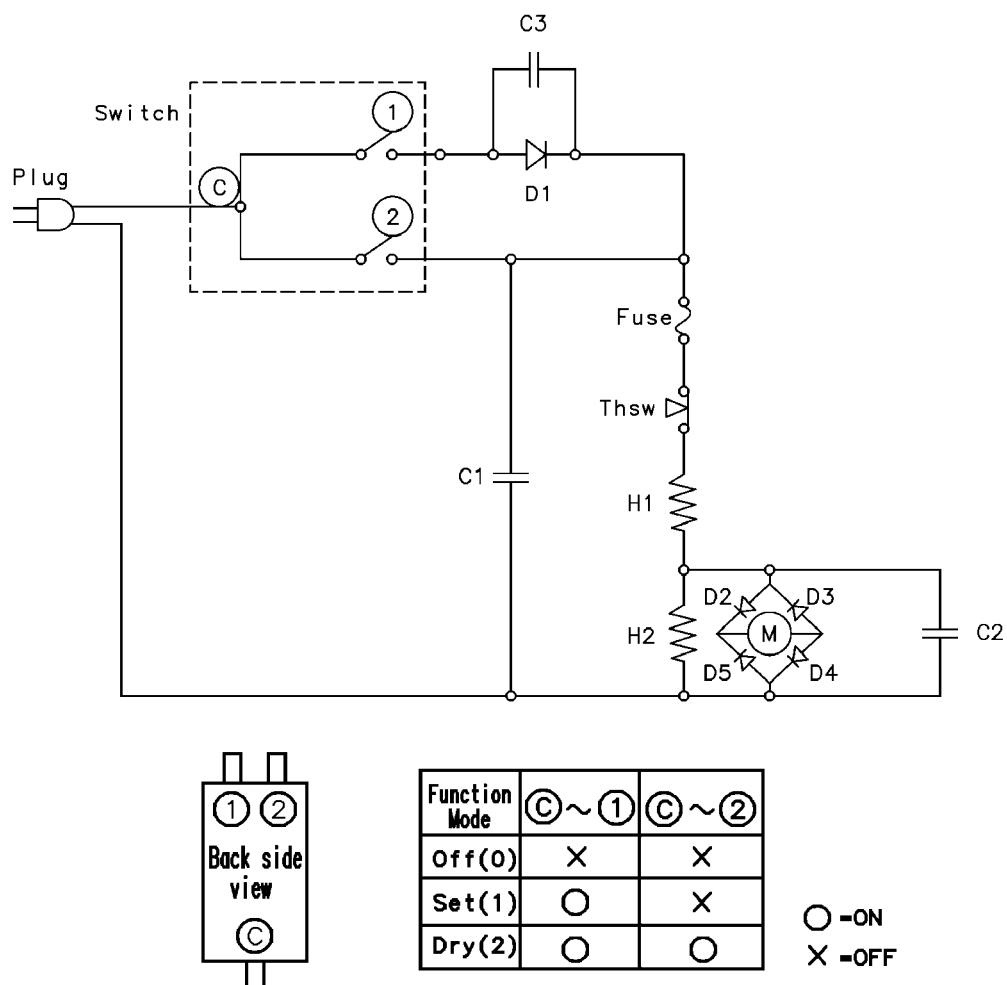


Air flow Block



Heater Block

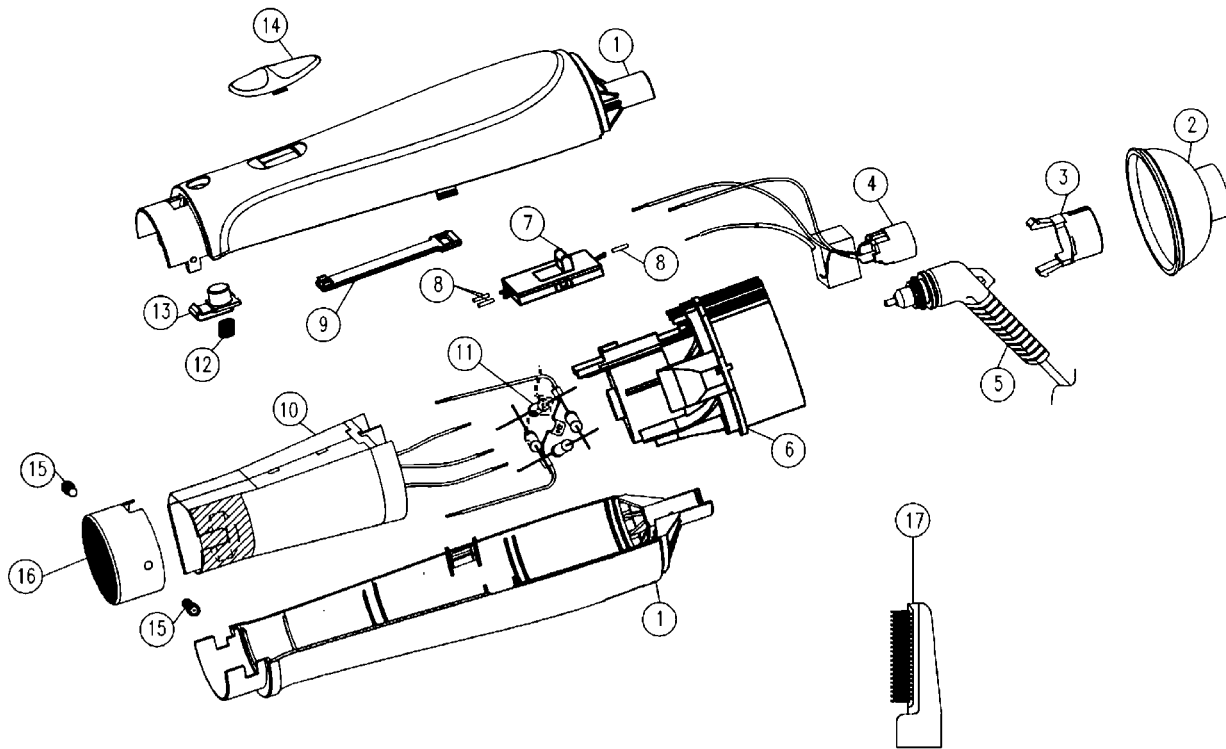
## 6 Schematic Diagram



SYMBOL	PART NAME	SPECIFICATION	Q'ty	REMARK
H1	RESISTANCE WIRE A	17.7±3%Ω/m	1	
H2	RESISTANCE WIRE B	21.1±3%Ω/m	1	
M	MOTOR	15VDC, 340mA	1	
Thsw	THERMAL CUT-OUT	120±5°C	1	
Fuse	THERMAL FUSE	15A 250V 184°C	1	
Switch	SELECT SWITCH	11A 125V 5.5A 250V	1	
D1	DIODE	1000VAC 7A	1	
D2-D5	RECTIFIER DIODE	600VAC 1A	1	
Plug	POWER CORD		1	
C1	INTERFERENCE SUPPRESSION CAPACITOR	0.1 μF 275 VAC	1	
C2	CAPACITOR ACROSS MOTOR	0.33 μF 50 VDC	1	
C3	CAPACITOR	0.015 μF 500 VDC	1	

## 7 Exploded View and Replacement Parts List

### 7.1. Model No. : EH-KA12 Exploded View for EH-KA12



Remarks : \*1 Individual Available

All parts are supplied from PMF-Thailand through PLAP

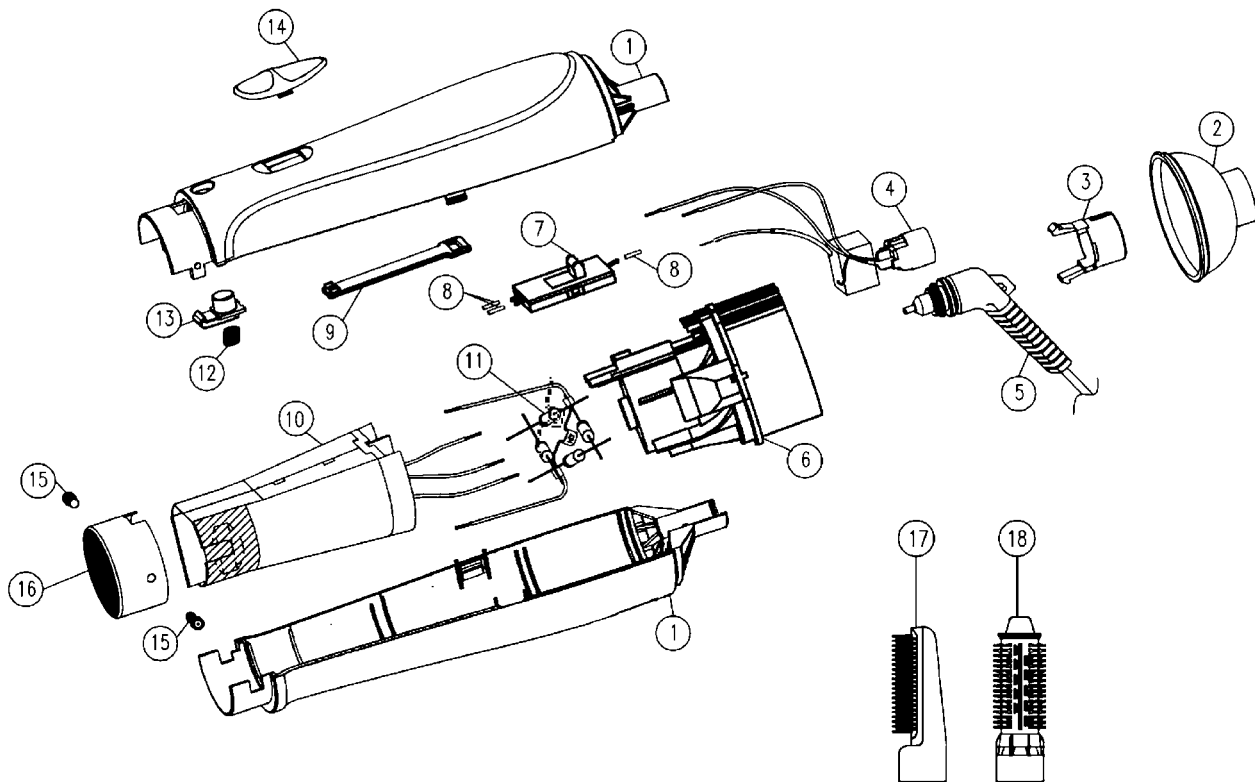
## 7.2. Model No. : EH-KA12 Parts List

Safety	Ref. No.	Part No.	Part Name & Description	Pcs	Remarks
	1	EHKA12HSWW	HOUSING AB	1	
	2	EHKA12FTWW	FILTER	1	
	3	EHKA12FRHW	FIXING RING (GRAY)	1	
	4	EHKA12CTB9W	CONNECTOR COVER BLOCK	1	
	5	EHKA12PCH9W	POWER CORD	1	(B2-PLUG)
	6	EHKA12MB9W	MOTOR BLOCK	1	
	7	EHKA12SSW	SELECT SWITCH	1	(INCLUDE 3 INSULATION TUBES)
	8	EHKA12ITBW	INSULATION TUBE	3	(3PCS/PACK)
	9	EHKA12ASPWW	ARM SWITCH PLATE	1	
	10	EHKA12HB9W	HEATER ASSEMBLY BLOCK	1	
	11	EHKA12RFB9W	RECTIFIER ASSEMBLY BLOCK	1	
	12	EHKA12CSHW	COIL SPRING	1	
	13	EHKA12PBWW	PUSH BUTTON	1	
	14	EHKA12SPWW	SWITCH PLATE	1	
	15	EHKA12T2604W	TORX SCREW	2	*1
	16	EHKA12ESW	ESCUTCHEON	1	
	17	EHKA12BAWW	BLOW BRUSH	1	
	-	EHKA1249503W	OPERATING INSTRUCTIONS	1	
	-	EHKA1249501W	INDIVIDUAL PACKAGE	1	
	-	EHKA12S09W	FILLER FOR PACKAGE	1	

Remarks : \*1 Individual Available

All parts are supplied from PMF-Thailand through PLAP

### 7.3. Model No. : EH-KA23 Exploded View for EH-KA23



Remarks : \*1 Individual Available

All parts are supplied from PMF-Thailand through PLAP

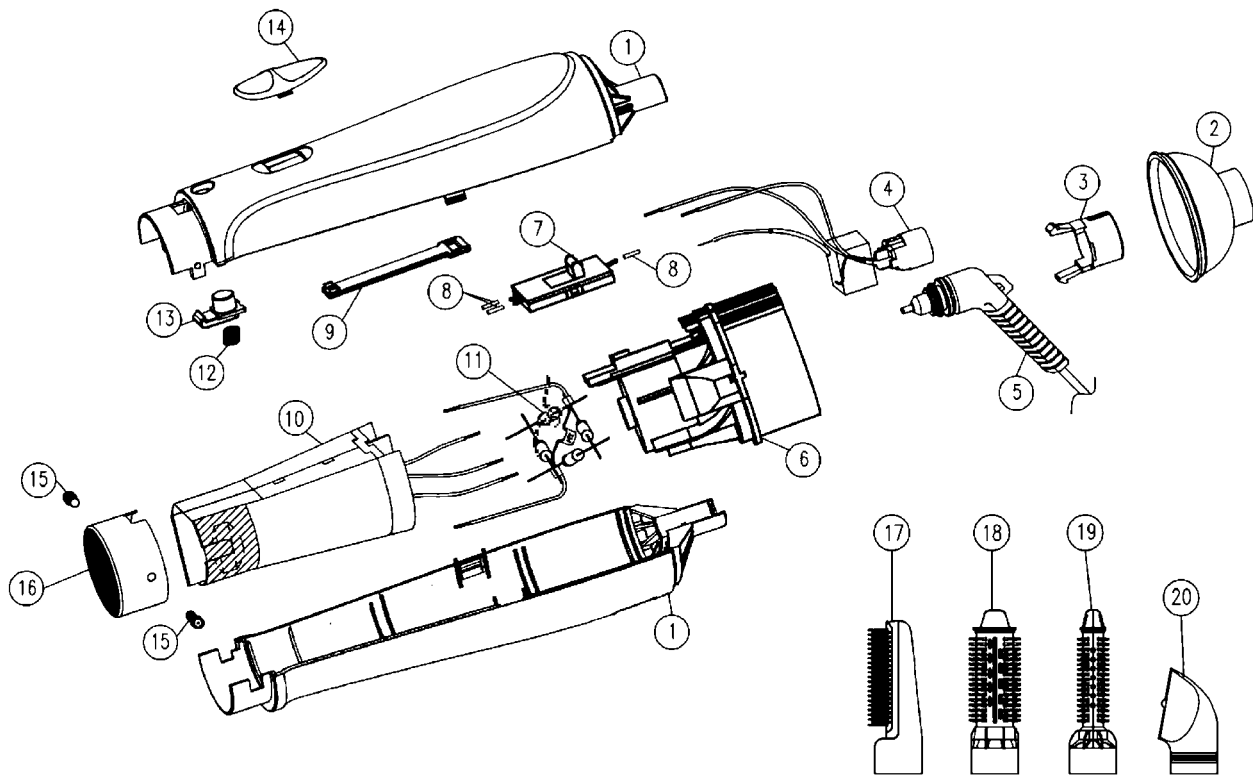
## 7.4. Model No. : EH-KA23 Parts List

Safety	Ref. No.	Part No.	Part Name & Description	Pcs	Remarks
	1	EHKA23HSPW	HOUSING AB	1	
	2	EHKA23FTPW	FILTER	1	
	3	EHKA23FRHW	FIXING RING	1	
	4	EHKA23CTB9W	CONNECTOR COVER BLOCK	1	
	5	EHKA23PCH9W	POWER CORD	1	(B2-PLUG)
	6	EHKA23MB9W	MOTOR BLOCK	1	
	7	EHKA23SSW	SELECT SWITCH	1	(INCLUDE 3 INSULATION TUBES)
	8	EHKA23ITBW	INSULATION TUBE	3	(3PCS/PACK)
	9	EHKA23ASPPW	ARM SWITCH PLATE	1	
	10	EHKA23HB9W	HEATER ASSEMBLY BLOCK	1	
	11	EHKA23RFB9W	RECTIFIER ASSEMBLY BLOCK	1	
	12	EHKA23CSHW	COIL SPRING	1	
	13	EHKA23PBPW	PUSH BUTTON	1	
	14	EHKA23SPPW	SWITCH PLATE	1	
	15	EHKA23T2604W	TORX SCREW	2	*1
	16	EHKA23ESW	ESCUTCHEON	1	
	17	EHKA23BAPW	BLOW BRUSH	1	
	18	EHKA23BRAPW	ROLLER BRUSH	1	
	-	EHKA2349503W	OPERATING INSTRUCTUIONS	1	
	-	EHKA2349501W	INDIVIDUAL PACKAGE	1	
	-	EHKA23S09W	FILLER FOR PACKAGE	1	

Remarks : \*1 Individual Available

All parts are supplied from PMF-Thailand through PLAP

## 7.5. Model No. : EH-KA42 Exploded View for EH-KA42



Remarks : \*1 Individual Available

All parts are supplied from PMF-Thailand through PLAP

## 7.6. Model No. : EH-KA42 Parts List

Safety	Ref. No.	Part No.	Part Name & Description	Pcs	Remarks
	1	EHKA42HSWW	HOUSING AB	1	
	2	EHKA42FTWW	FILTER	1	
	3	EHKA42FRHW	FIXING RING	1	
	4	EHKA42CTB9W	CONNECTOR COVER BLOCK	1	
	5	EHKA42PCH9W	POWER CORD	1	(B2-PLUG)
	6	EHKA42MB9W	MOTOR BLOCK	1	
	7	EHKA42SSW	SELECT SWITCH	1	(INCLUDE 3 INSULATION TUBES)
	8	EHKA42ITBW	INSULATION TUBE	3	(3PCS/PACK)
	9	EHKA42ASPWW	ARM SWITCH PLATE	1	
	10	EHKA42HB9W	HEATER ASSEMBLY BLOCK	1	
	11	EHKA42RFB9W	RECTIFIER ASSEMBLY BLOCK	1	
	12	EHKA42CSHW	COIL SPRING	1	
	13	EHKA42PBWW	PUSH BUTTON	1	
	14	EHKA42SPWW	SWITCH PLATE	1	
	15	EHKA42T2604W	TORX SCREW	2	*1
	16	EHKA42ESW	ESCUTCHEON	1	
	17	EHKA42BAWW	BLOW BRUSH	1	
	18	EHKA42BRAWW	ROLLER BRUSH	1	
	19	EHKA42SRWW	SLIM ROLLER BRUSH	1	
	20	EHKA42NZWW	NOZZLE	1	
	-	EHKA4249503W	OPERATING INSTRUCTIONS	1	
	-	EHKA4249501W	INDIVIDUAL PACKAGE	1	
	-	EHKA42S09W	PULP FILLER FOR PACKAGE	1	

Remarks : \*1 Individual Available

All parts are supplied from PMF-Thailand through PLAP